



ON Semiconductor®

Importing Spice Models into OrCAD

Download .LIB File from ONSemi.com

Home > Support > Design Support > Design Resources > **Simulation Models**

Simulation Models

A complete listing of models for ON Semiconductor products. ON Semiconductor provides many model types including SPICE, PSPICE, ISPICE and ORCAD.

Search for models by using the flyout menus or by entering a part number or keyword. Use table column headers to sort the columns.

Simulation Models (8287) - or -

All Simulation Models

1 - 4 of 4 [1]

Left click.

Document Title	Document ID/Size
PSpice Model	NSS30101LT1G.LIB (0.0kB)
Saber Model	NSS30101LT1G.SIN (1.0kB)
Spice2 Model	NSS30101LT1G.SP2 (0.0kB)
Spice3 Model	NSS30101LT1G.SP3 (0.0kB)



Download .LIB File from ONSemi.com

Home > Support > Design Support > Design Resources > **Simulation Models**

Simulation Models

A complete listing of models for ON Semiconductor products. ON Semiconductor provides many model types including SPICE, PSPICE, ISPICE and ORCAD.

Search for models by using the flyout menus or by entering a part number or keyword. Use table column headers to sort the columns.

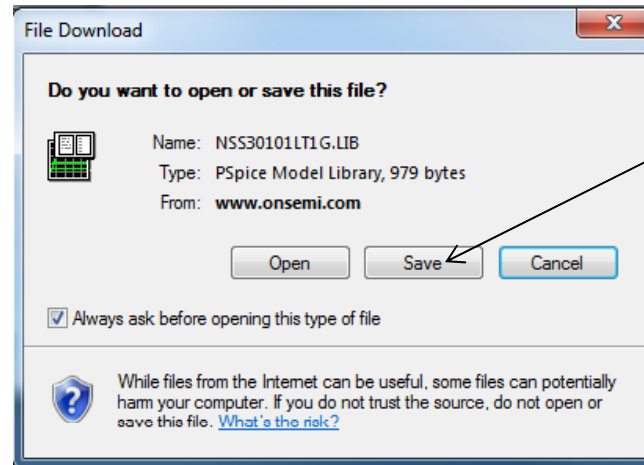
Simulation Models (8287) - or -

All Simulation Models

1 - 4 of 4 [1]

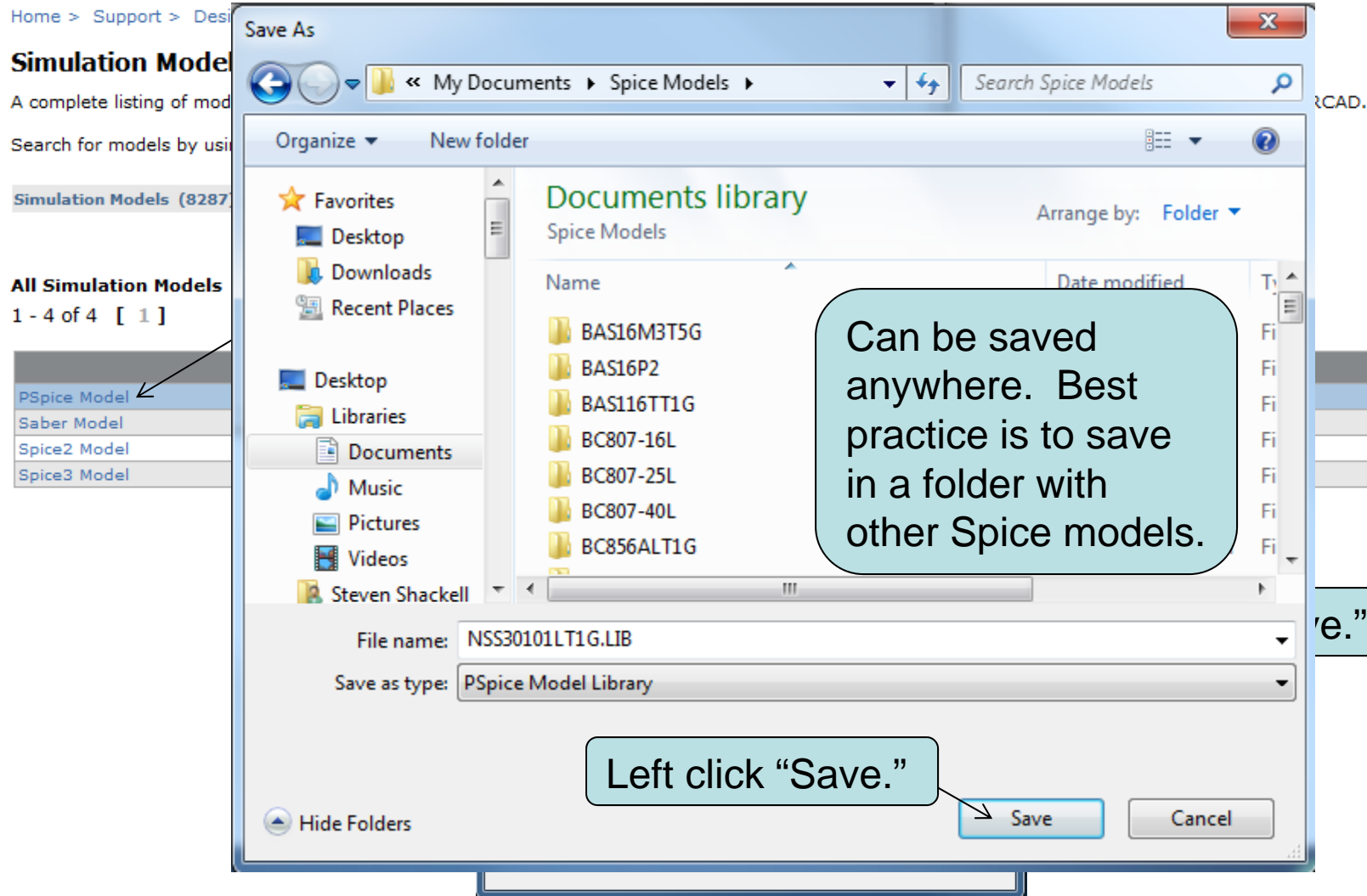
Left click.

Document Title	Document ID/Size
PSPice Model	NSS30101LT1G.LIB (0.0kB)
Saber Model	NSS30101LT1G.SIN (1.0kB)
Spice2 Model	NSS30101LT1G.SP2 (0.0kB)
Spice3 Model	NSS30101LT1G.SP3 (0.0kB)



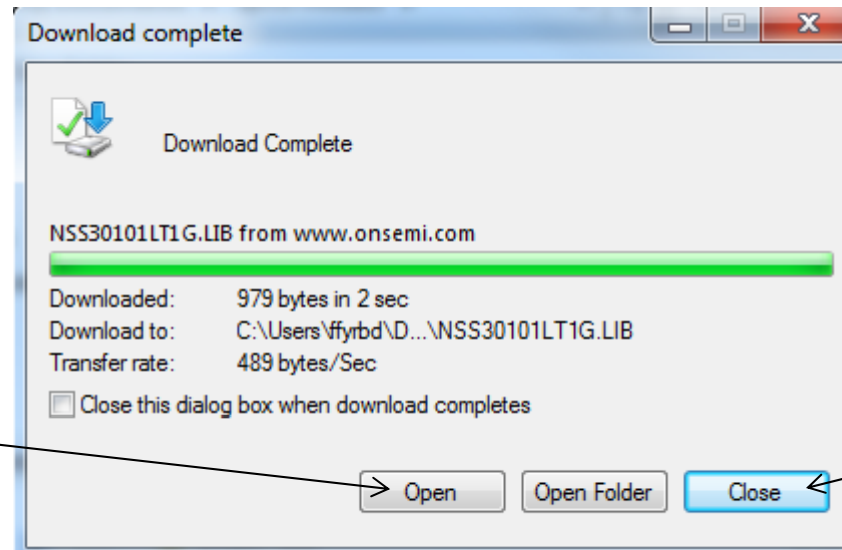
Left click "Save."

Download .LIB File from ONSemi.com



Open .LIB File

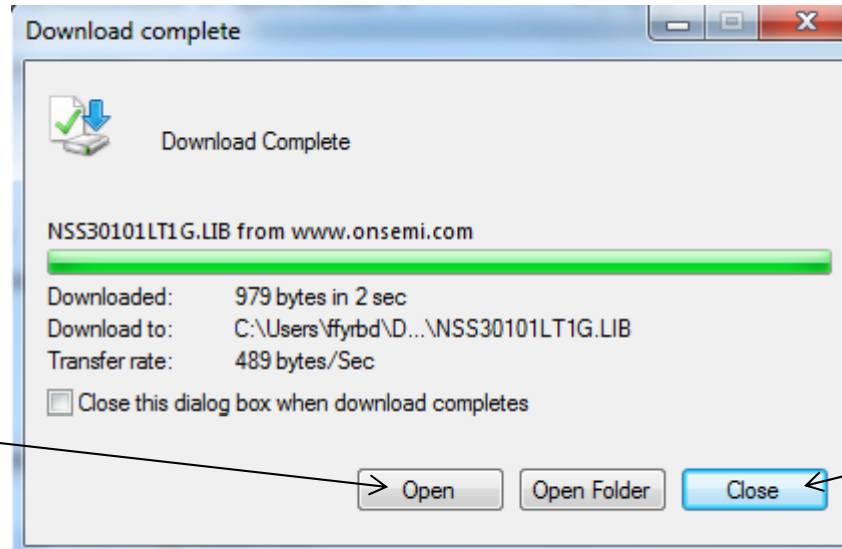
Left click “Open.”
This will open the
Model Editor if it
is the default
program for .LIB
files.



If unsure what
the default
program is for
.LIB files left click
“Close,” and
follow next steps
on this slide.

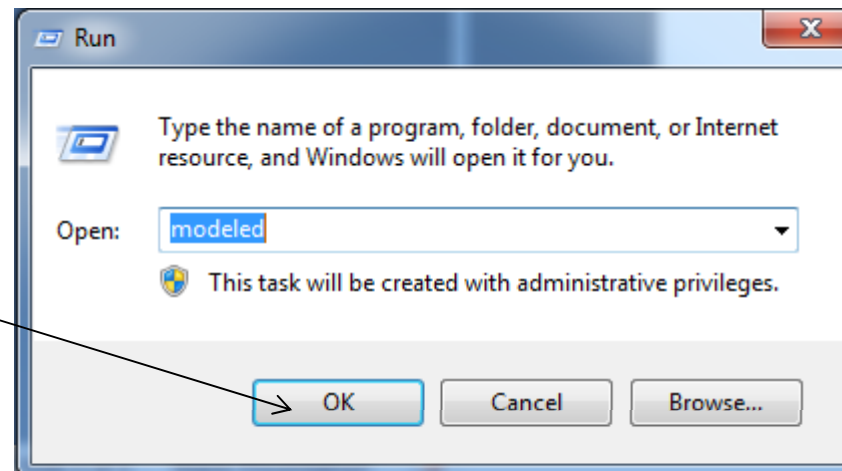
Open .LIB File

Left click “Open.”
This will open the
Model Editor if it
is the default
program for .LIB
files.

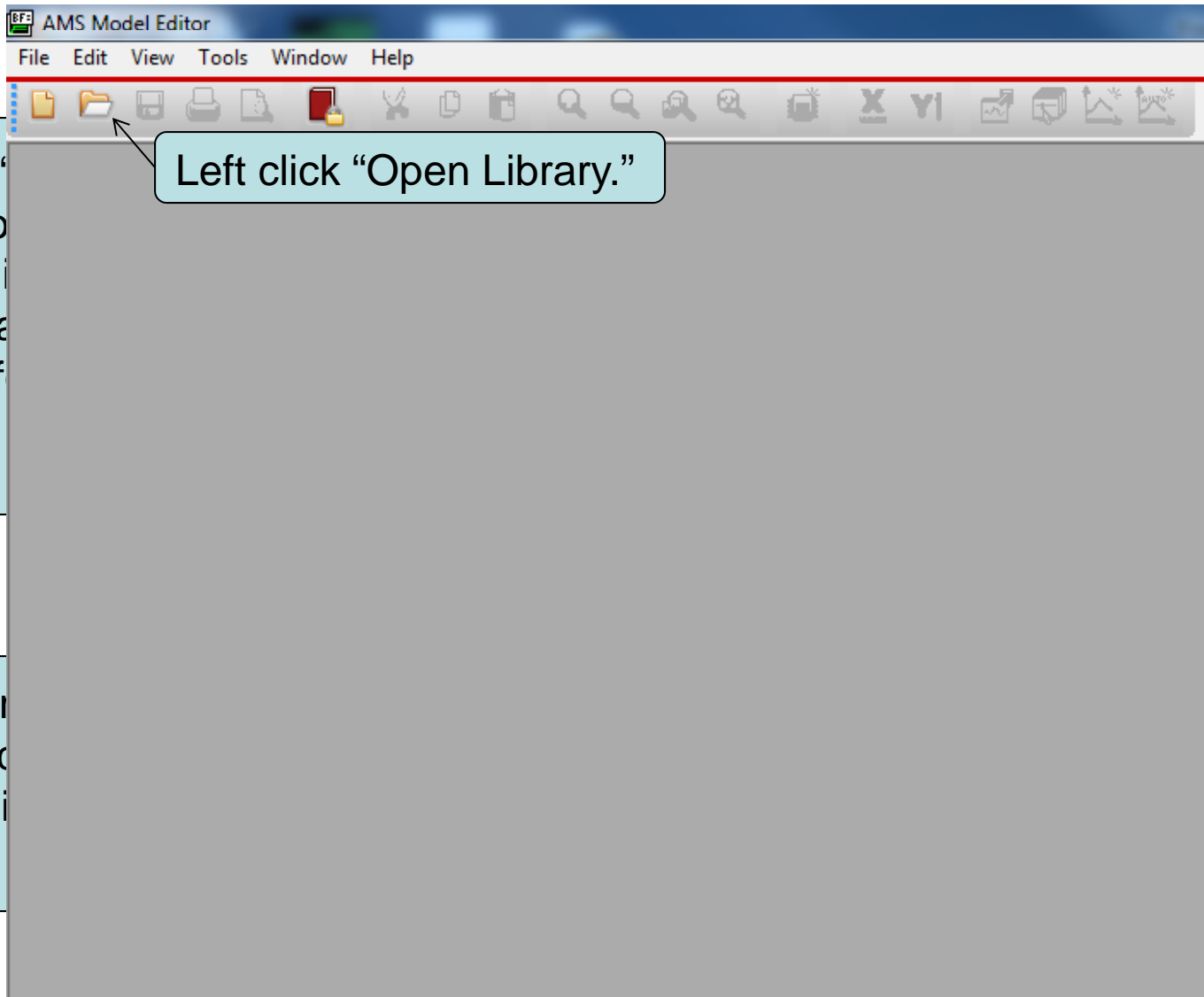


If unsure what
the default
program is for
.LIB files left click
“Close,” and
follow next steps
on this slide.

Go to Start → Run.
Type “modeled”
and left click “OK”



Open .LIB File



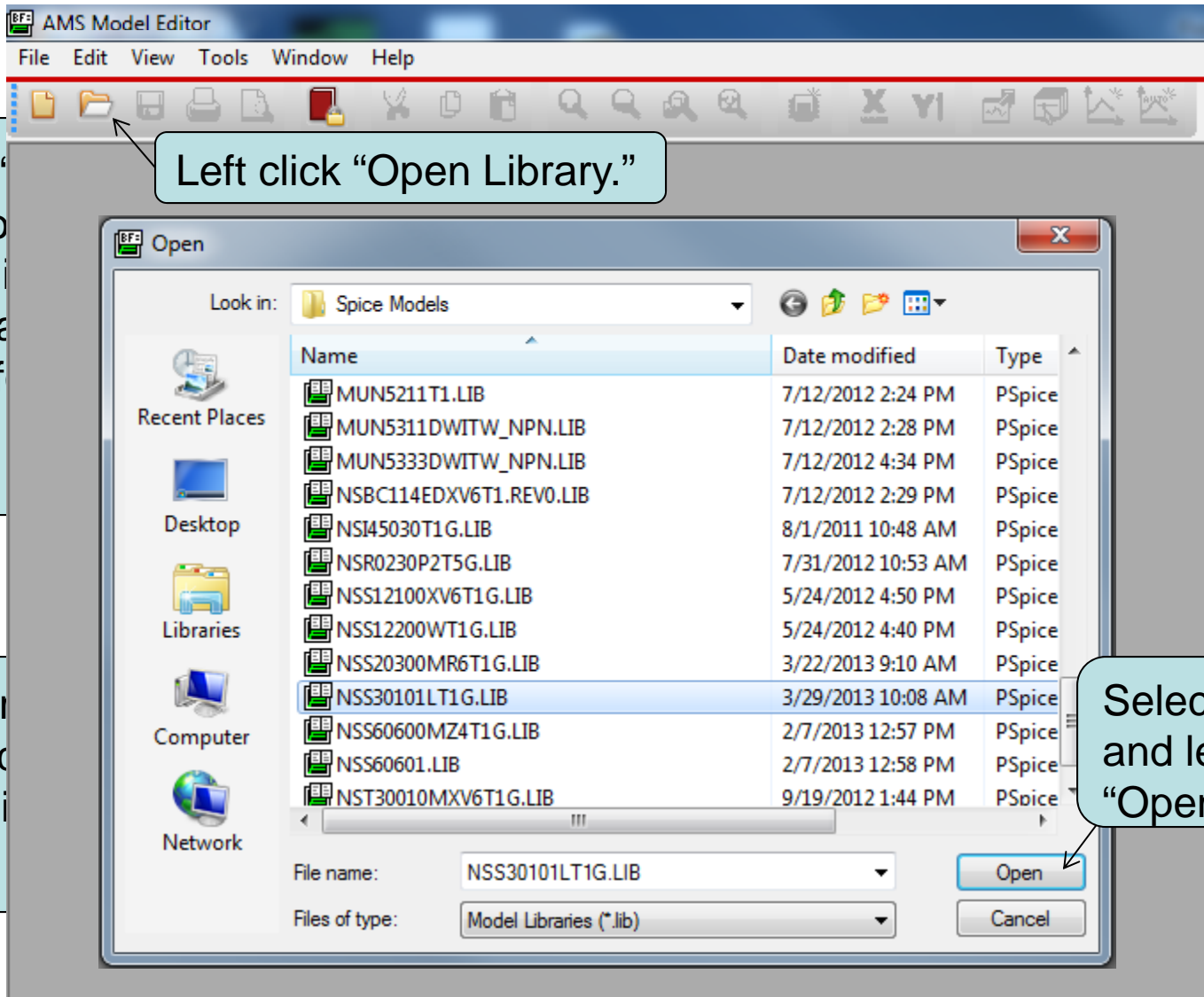
Left click
This will o
Model Edi
is the defa
program f
files.

Left click "Open Library."

what
ult
is for
left click
and
next steps
lide.

Go to Star
Type "moc
and left cli

Open .LIB File



Left click
This will o
Model Edi
is the defa
program f
files.

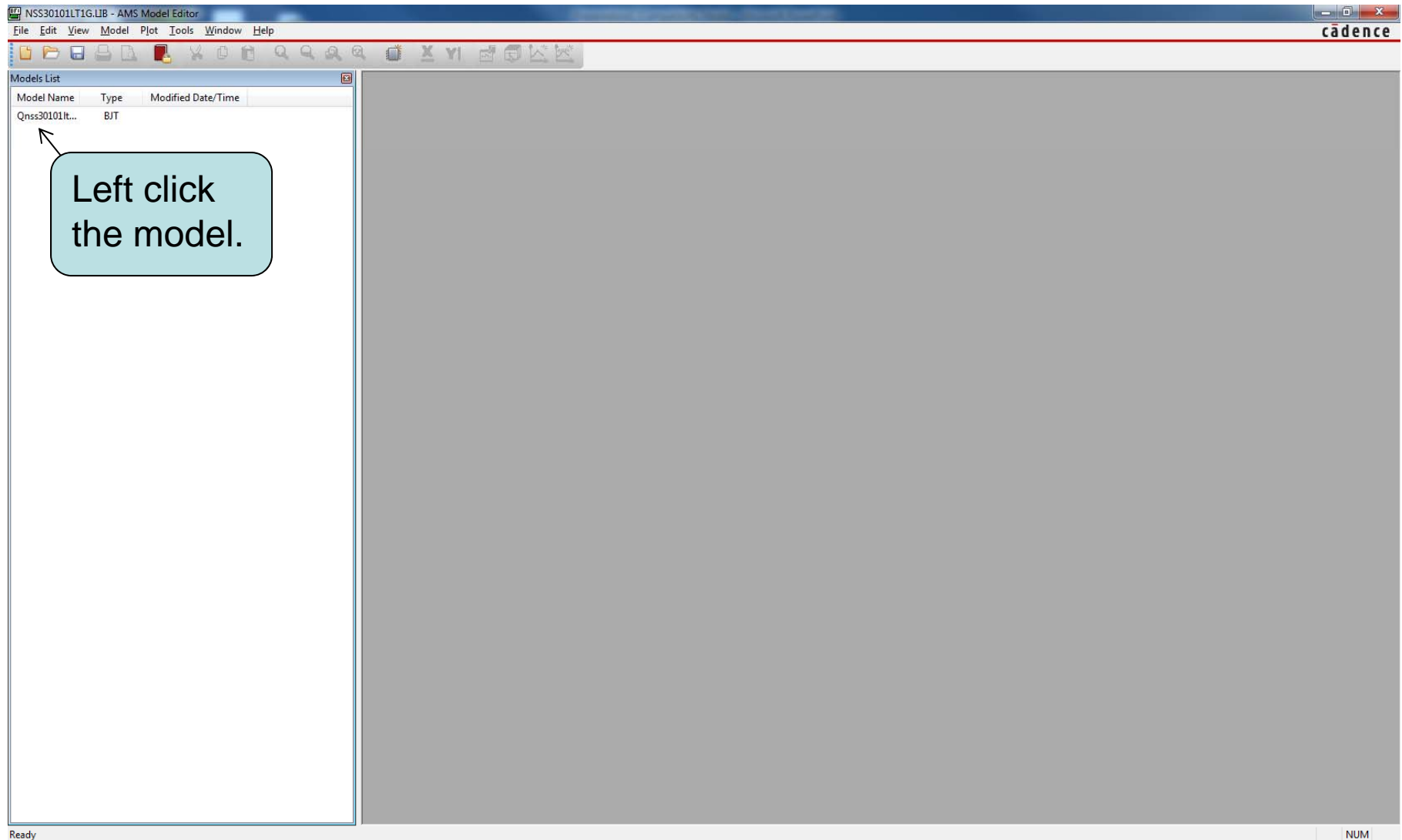
Left click "Open Library."

Go to Star
Type "mod
and left cli

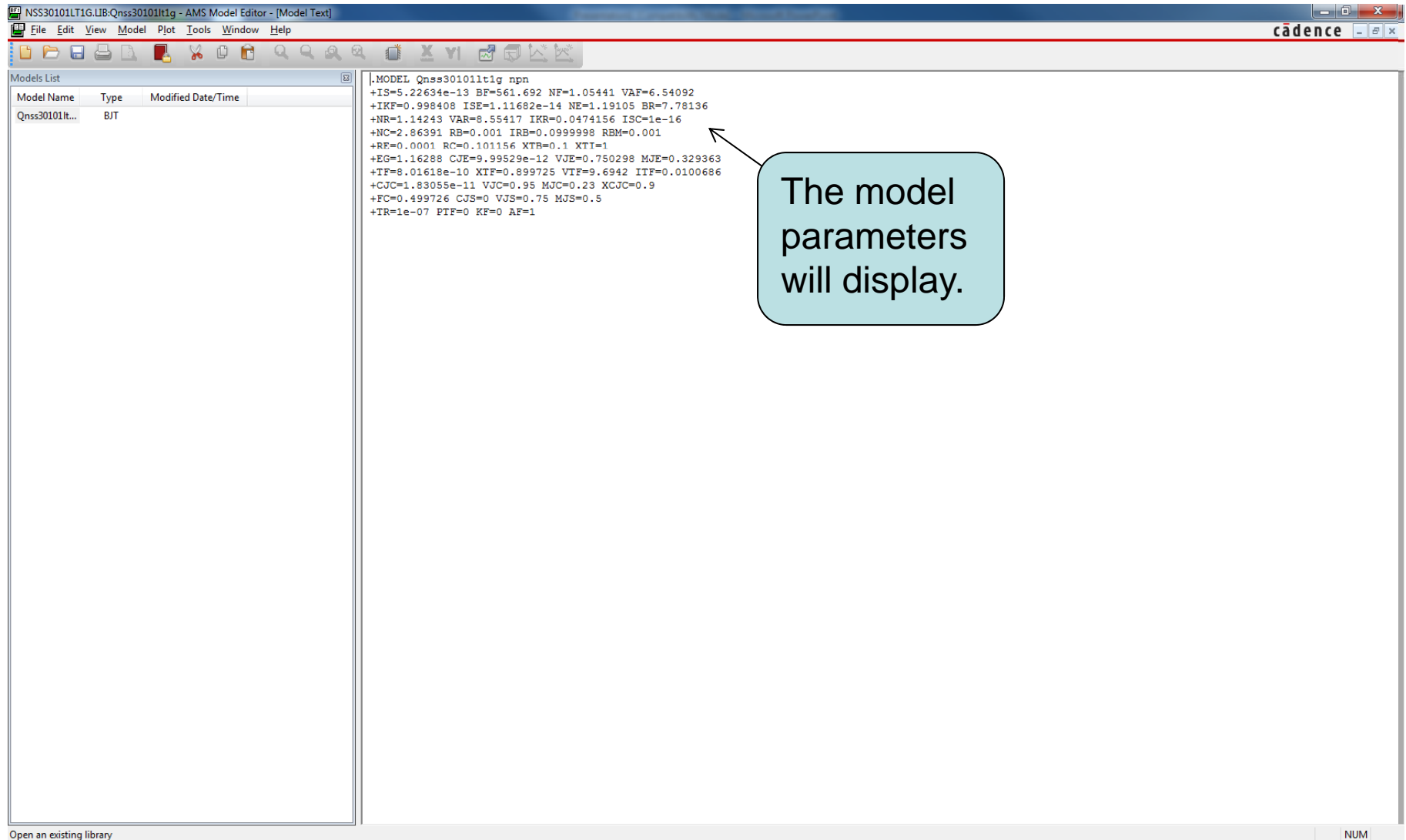
what
ult
is for
left click
and
next steps
slide.

Select your file
and left click
"Open."

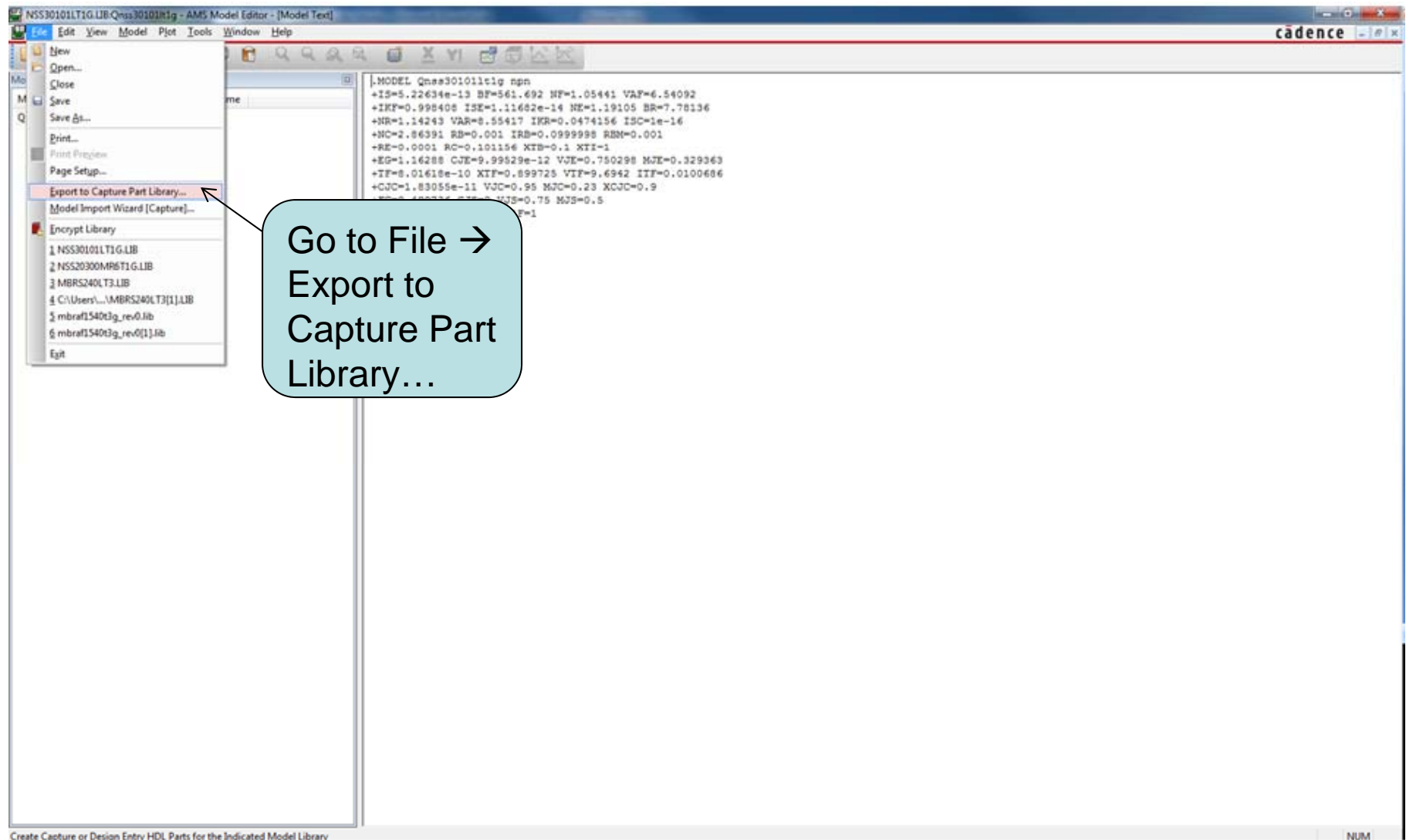
Display Parameters



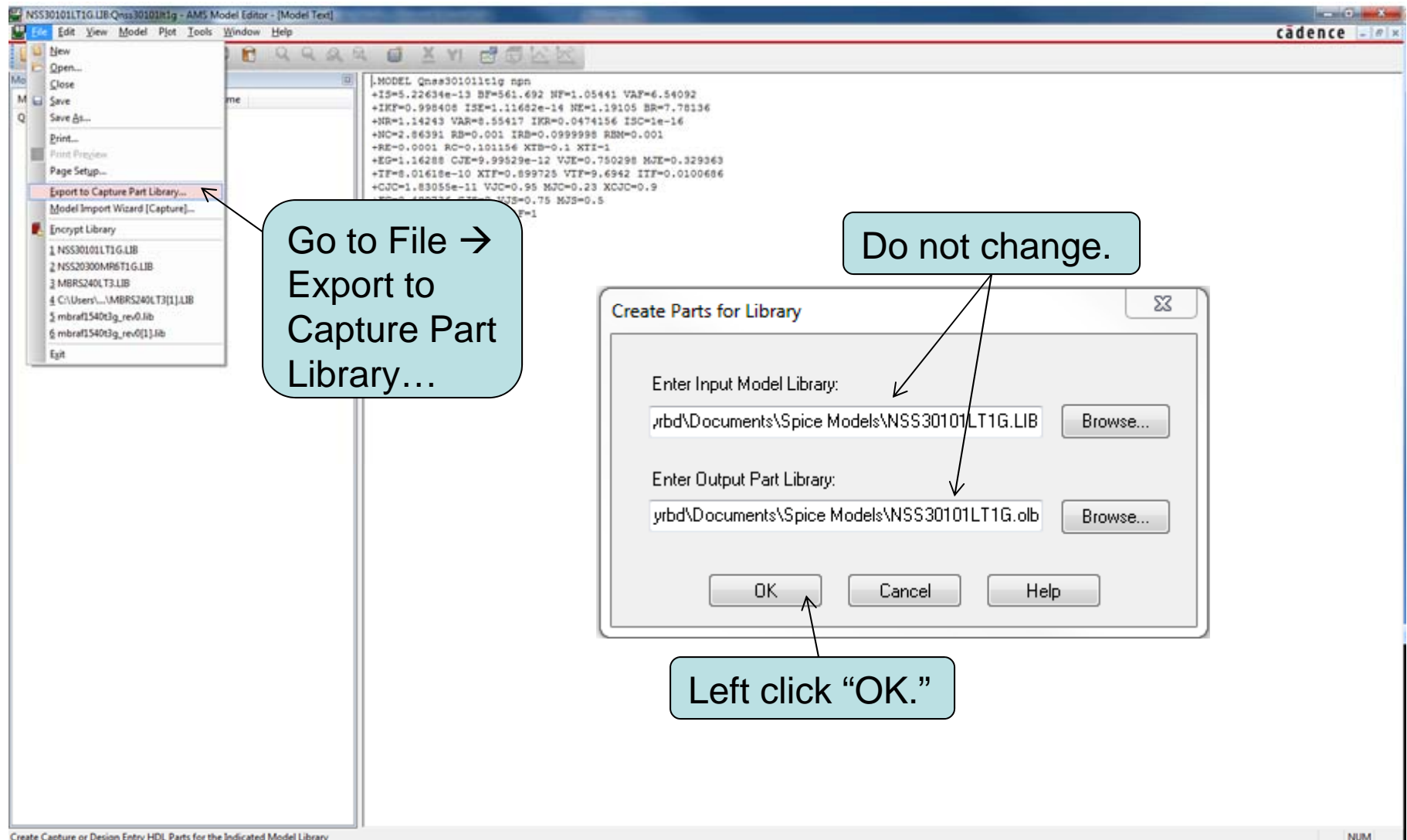
Display Parameters



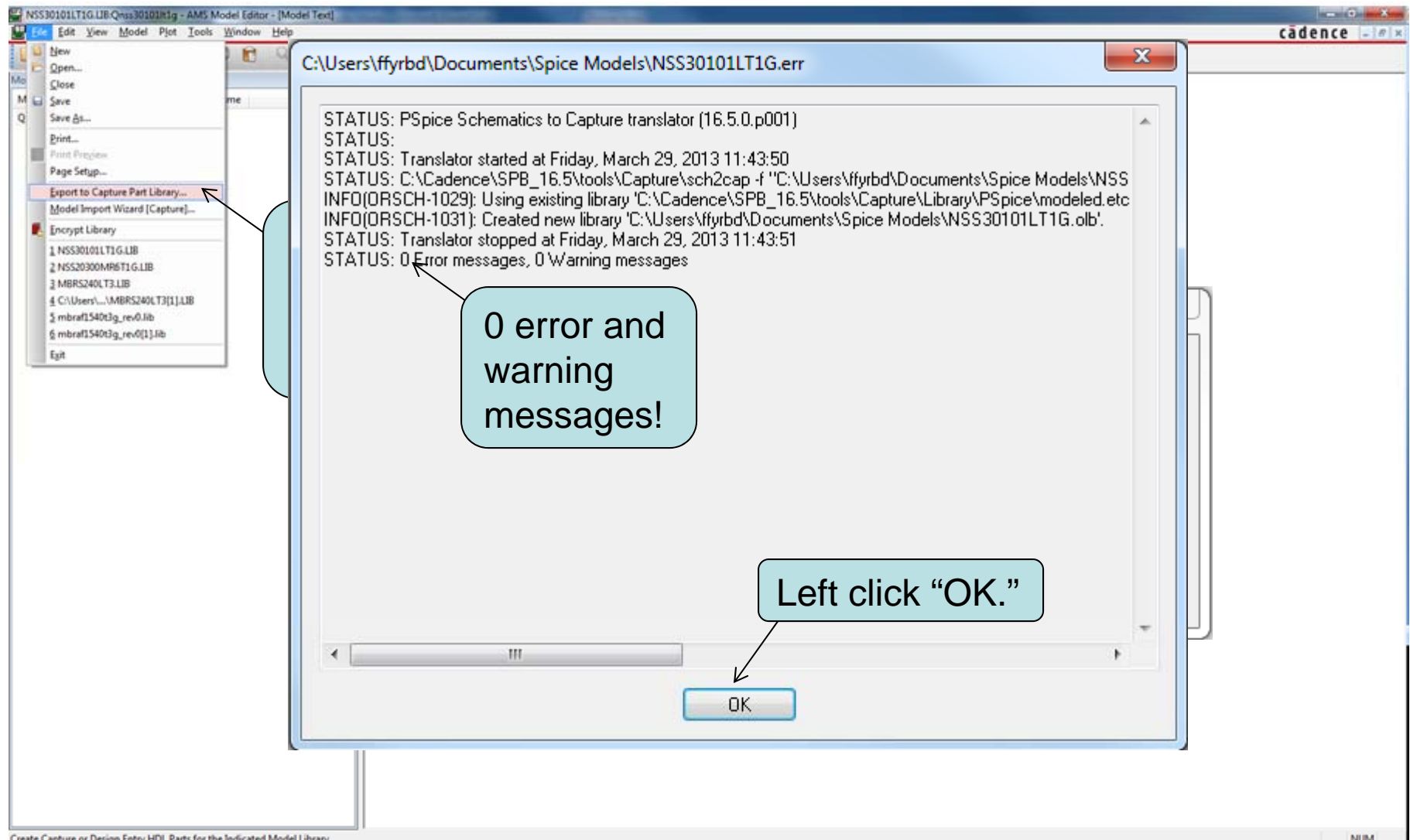
Export to .OLB File



Export to .OLB File

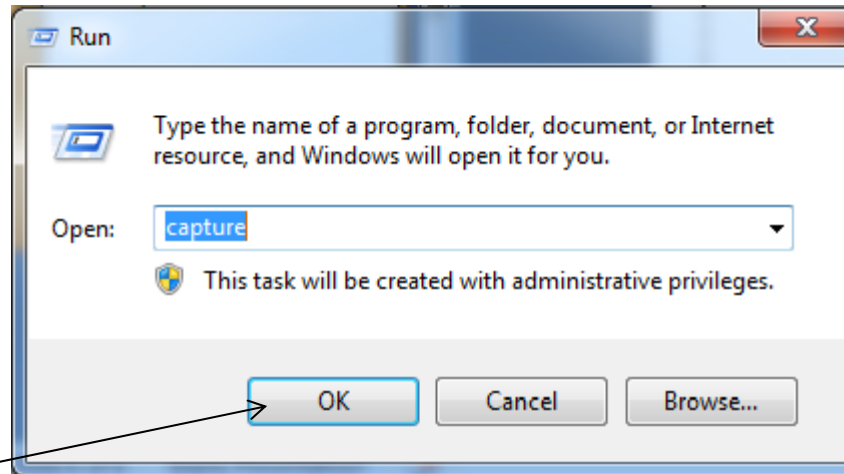


Export to .OLB File

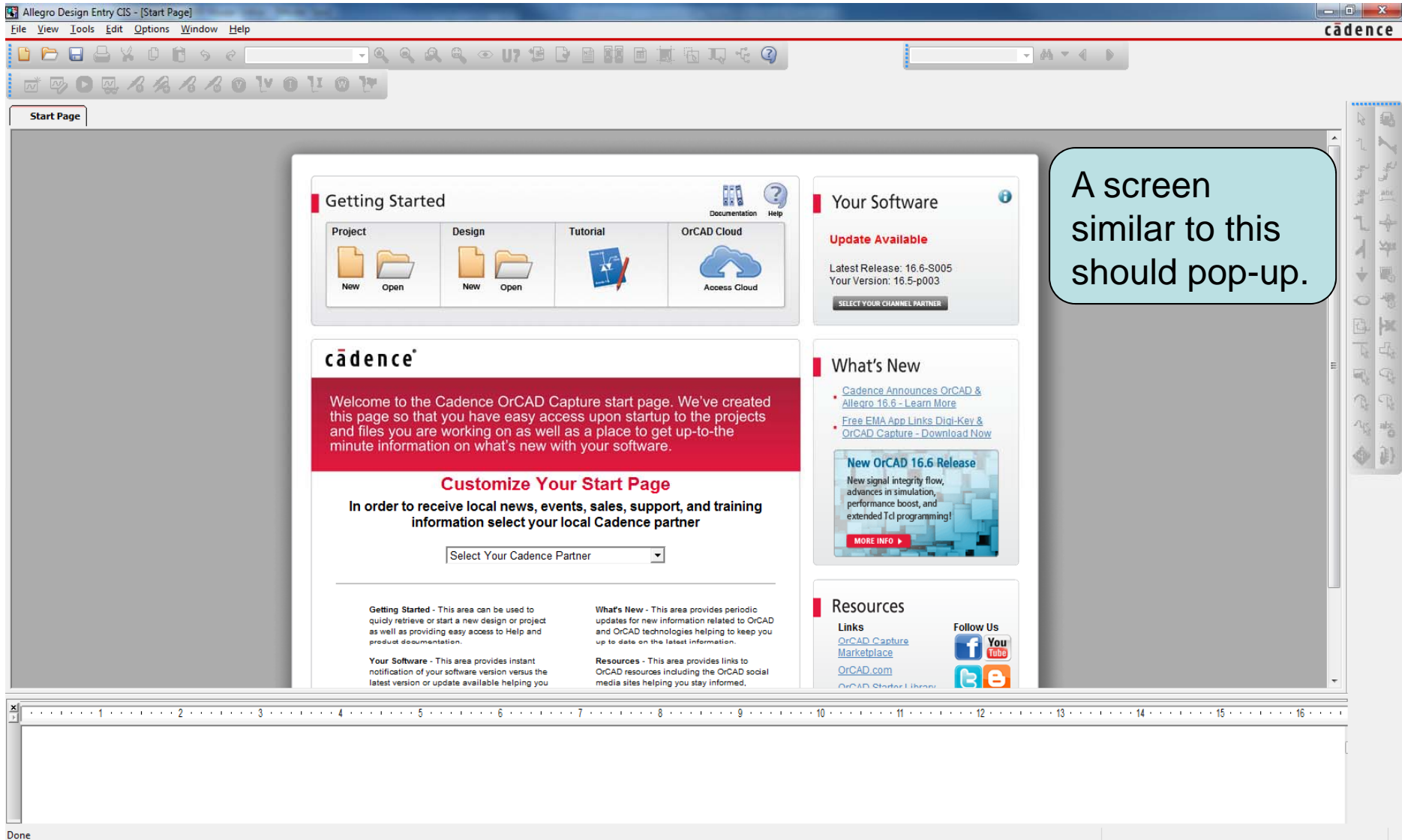


Create/Open Project in OrCAD

Run OrCAD.
You can do this
any way you are
use to.
If this is your first
time go to Start
→ Run and type
in “capture”, left
click “OK.”

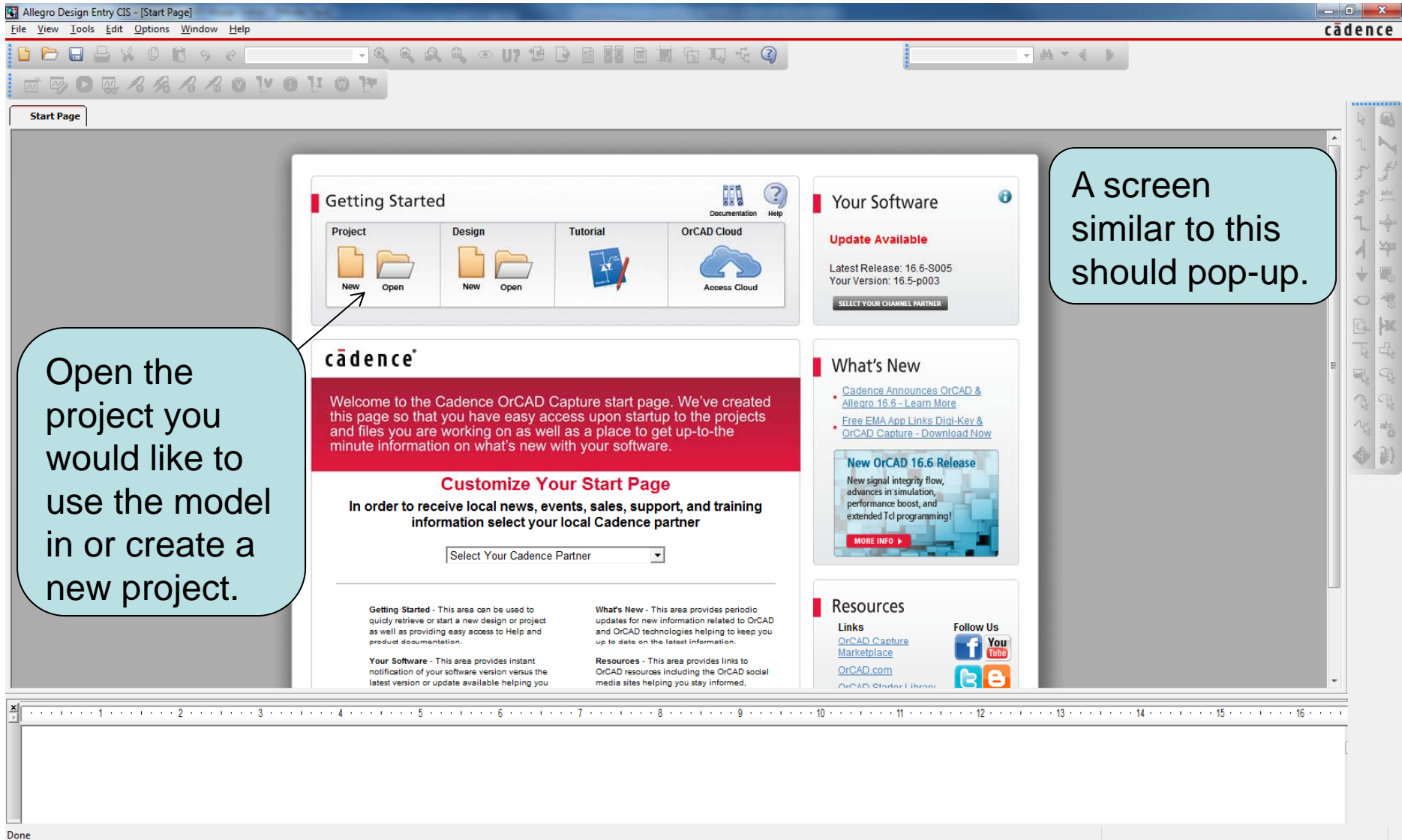


Create/Open Project in OrCAD

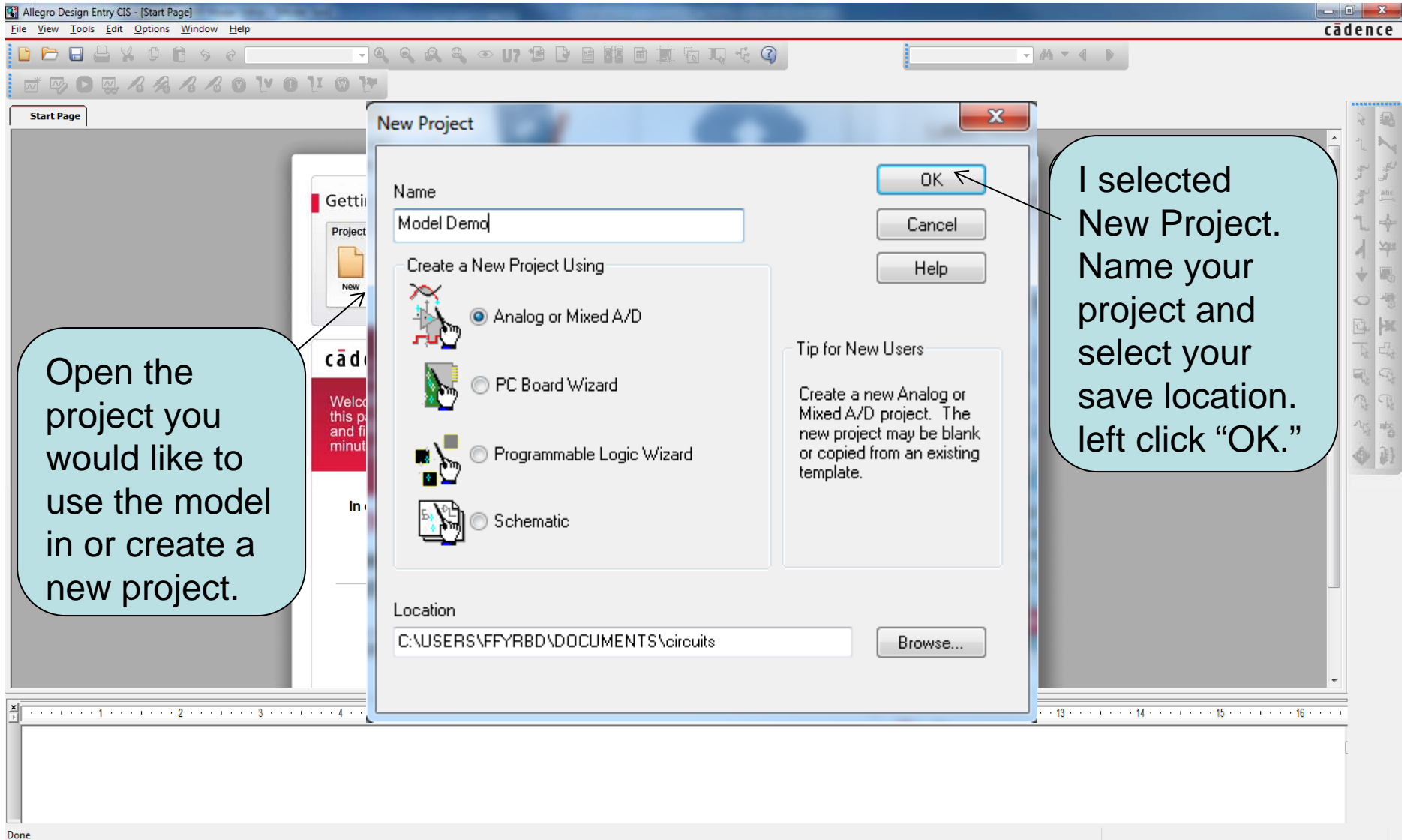


A screen similar to this should pop-up.

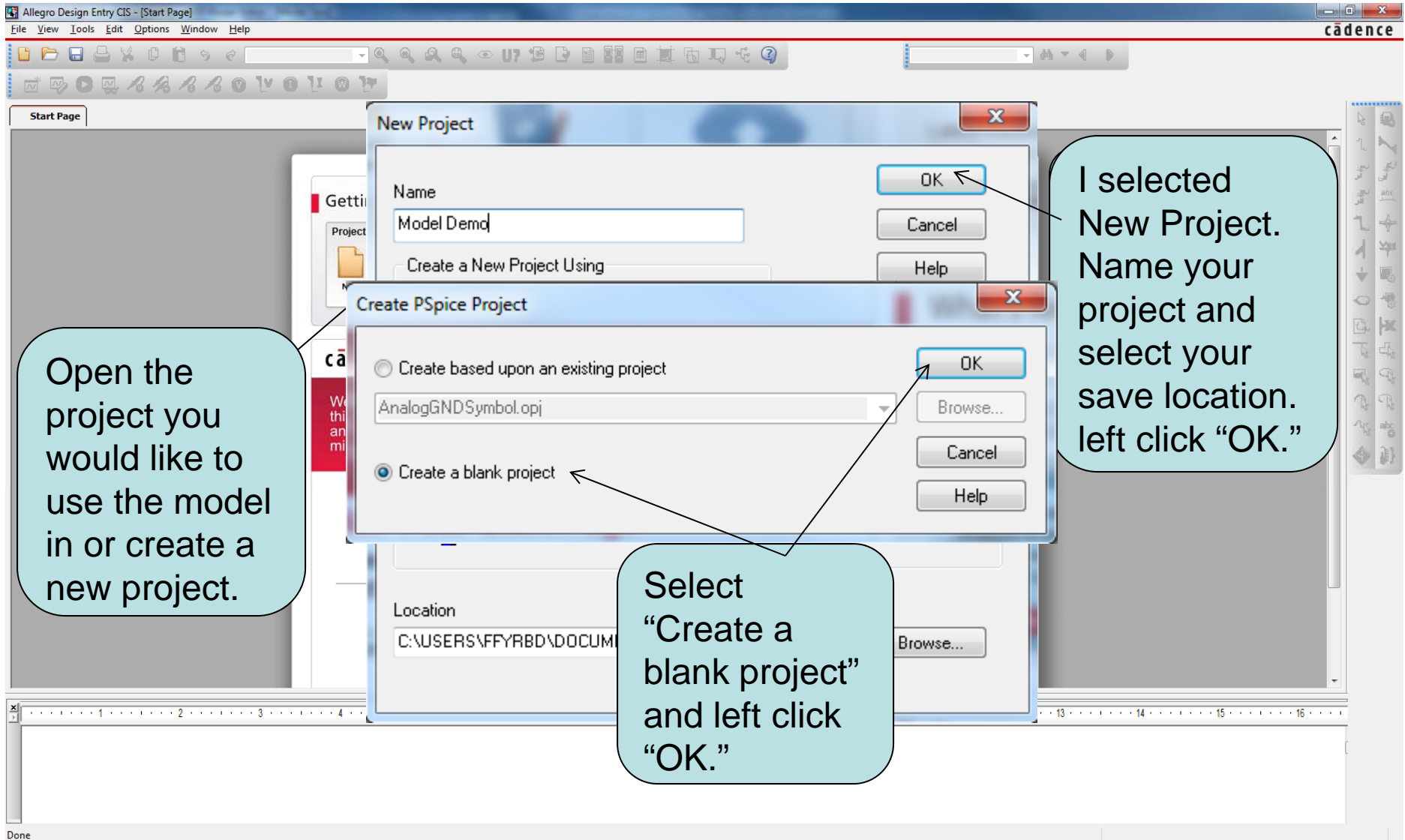
Create/Open Project in OrCAD



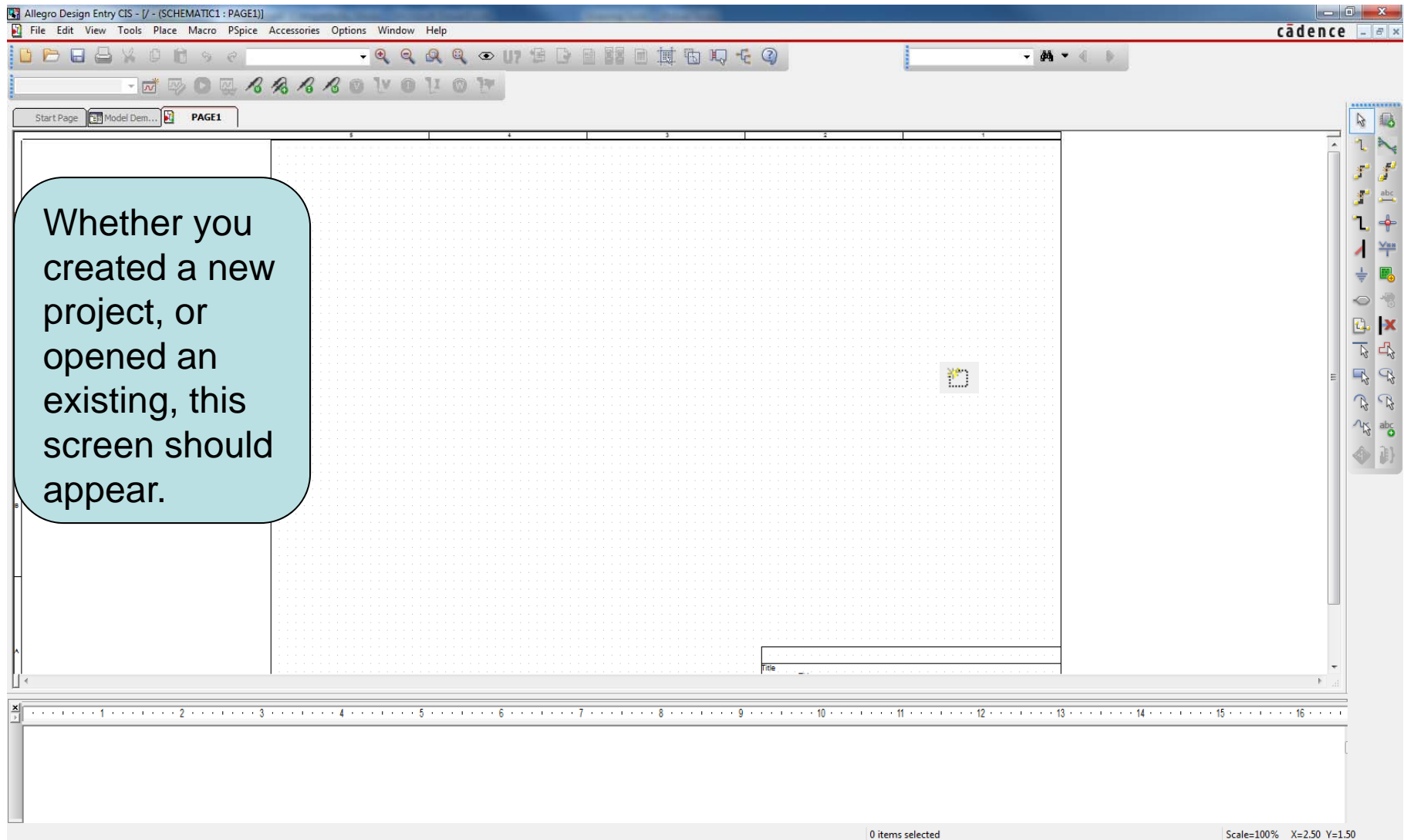
Create/Open Project in OrCAD



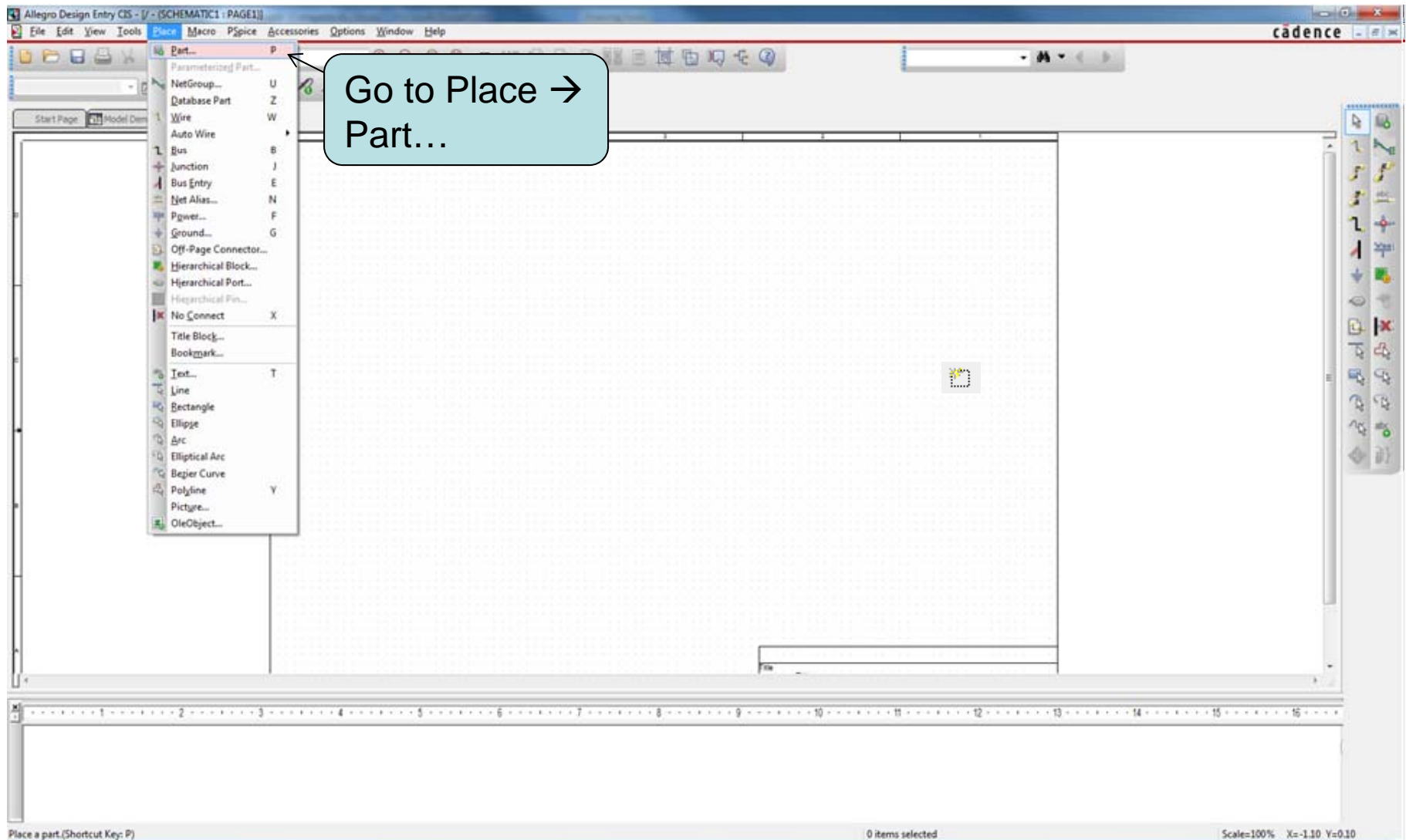
Create/Open Project in OrCAD



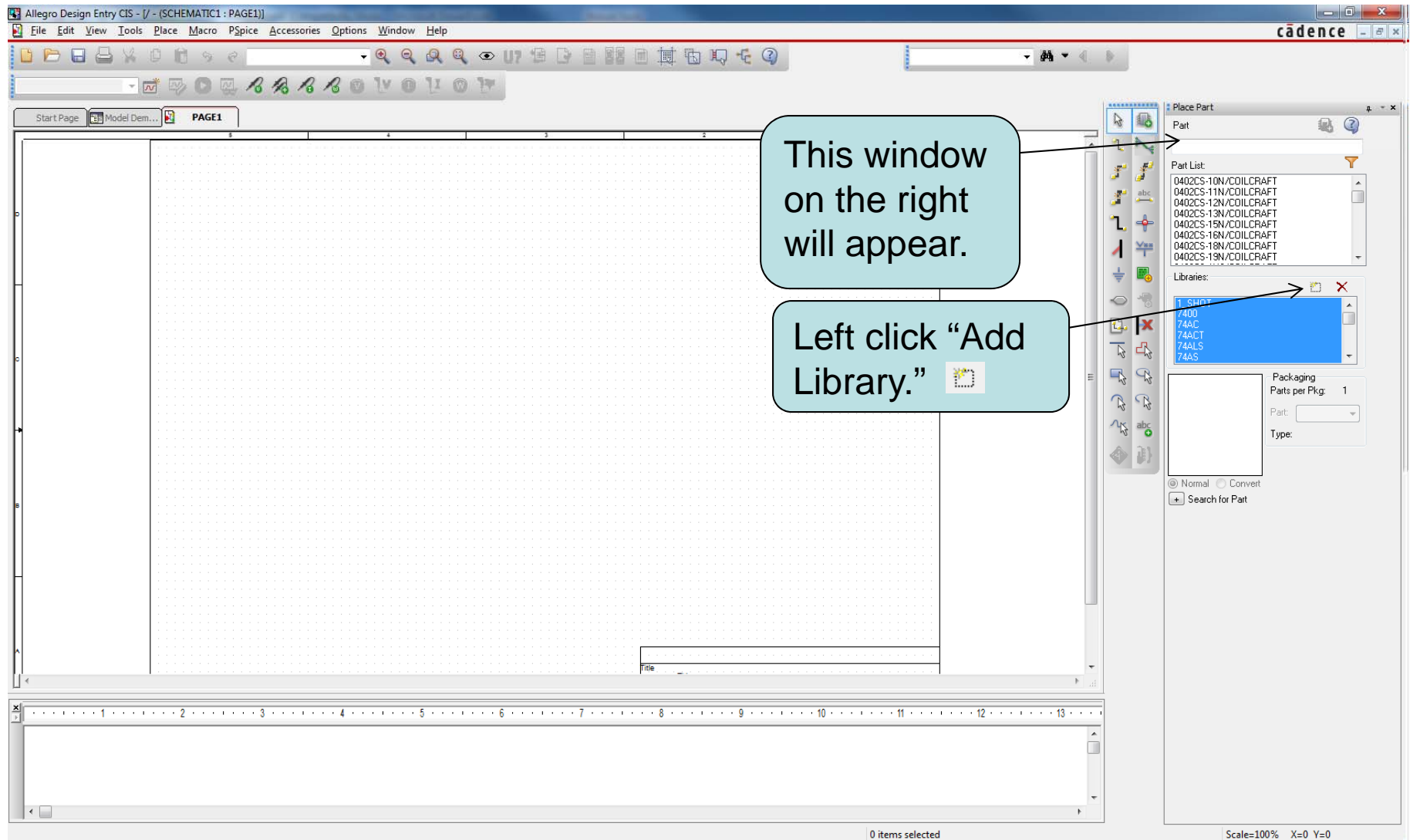
Import .OLB File into OrCAD



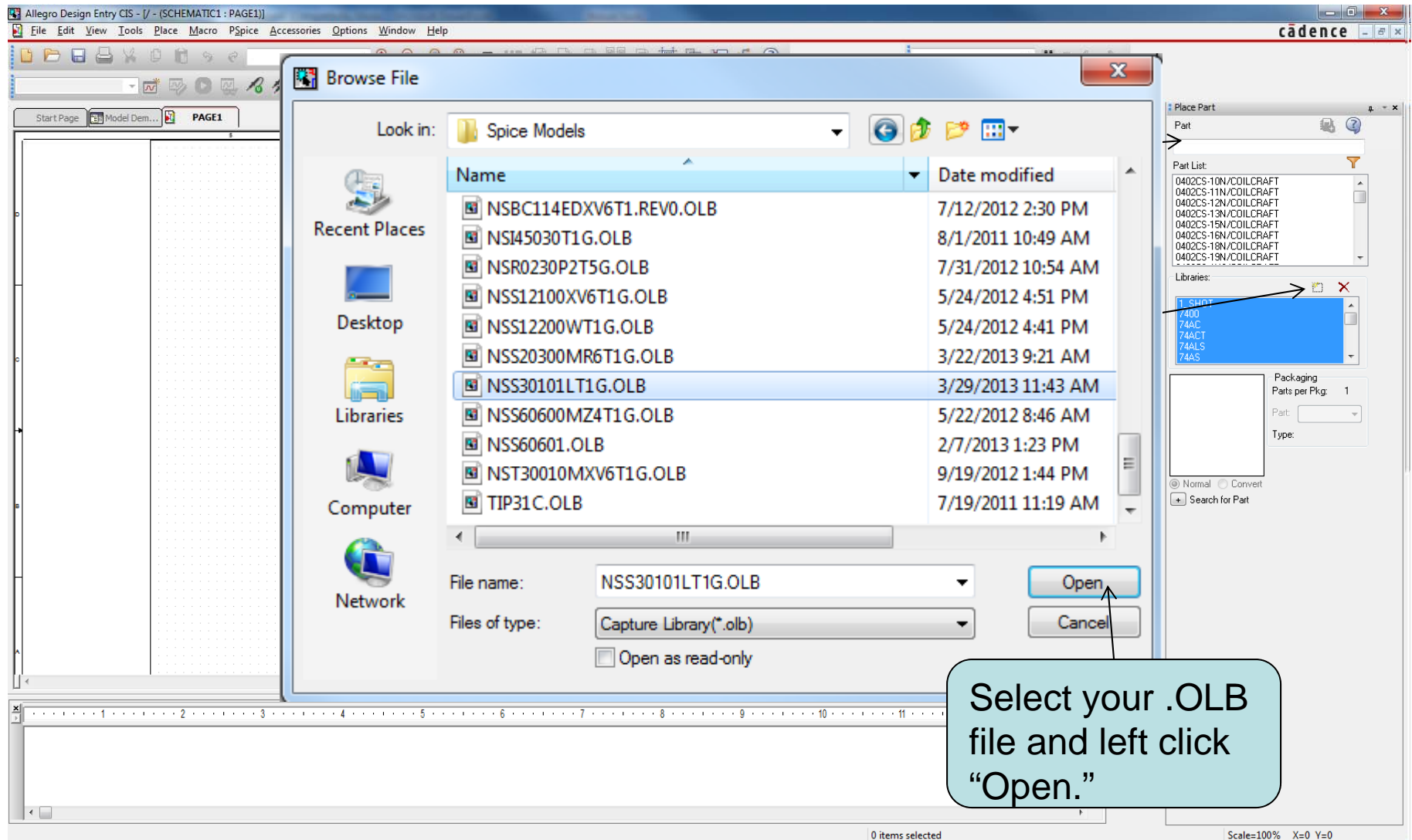
Import .OLB File into OrCAD



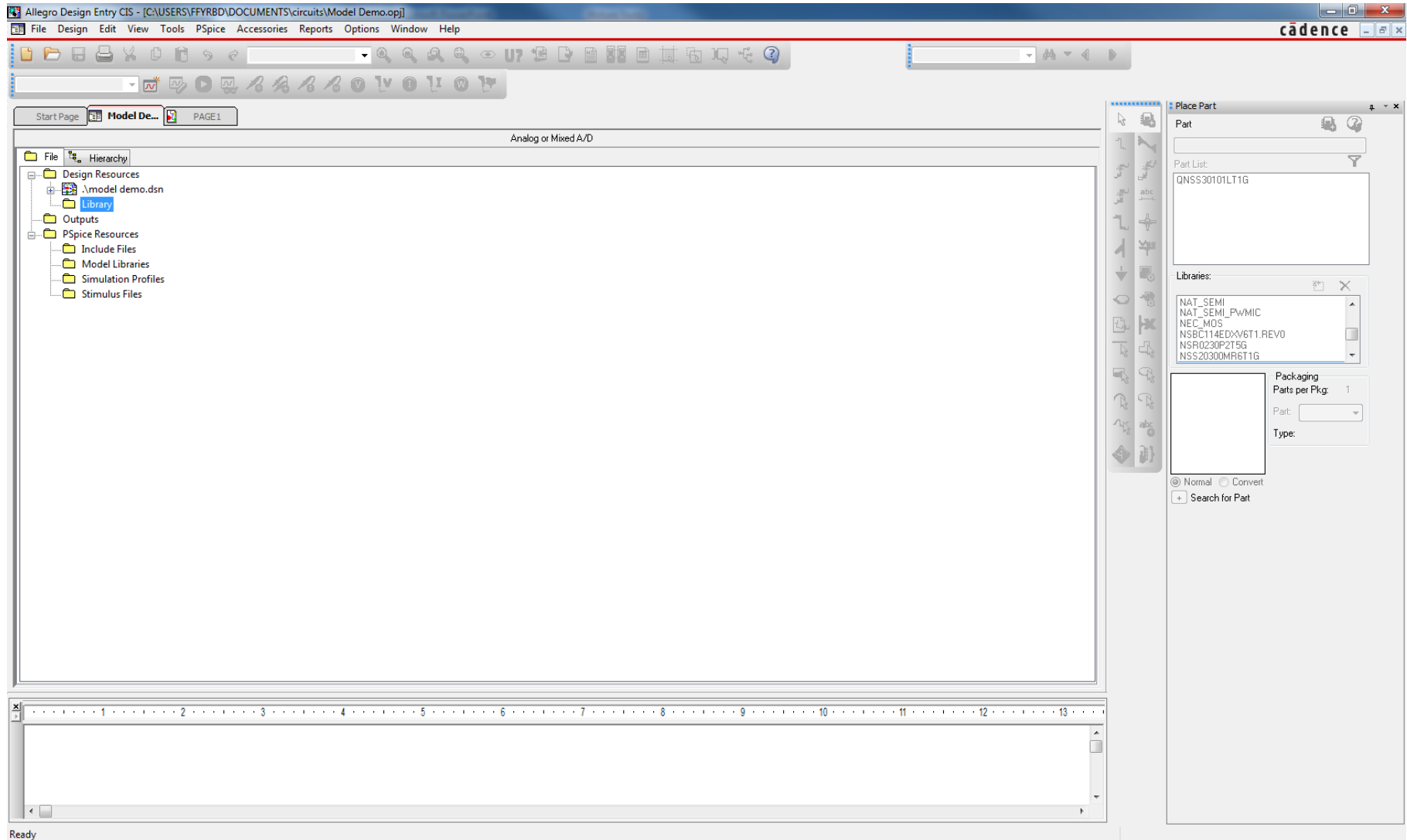
Import .OLB File into OrCAD



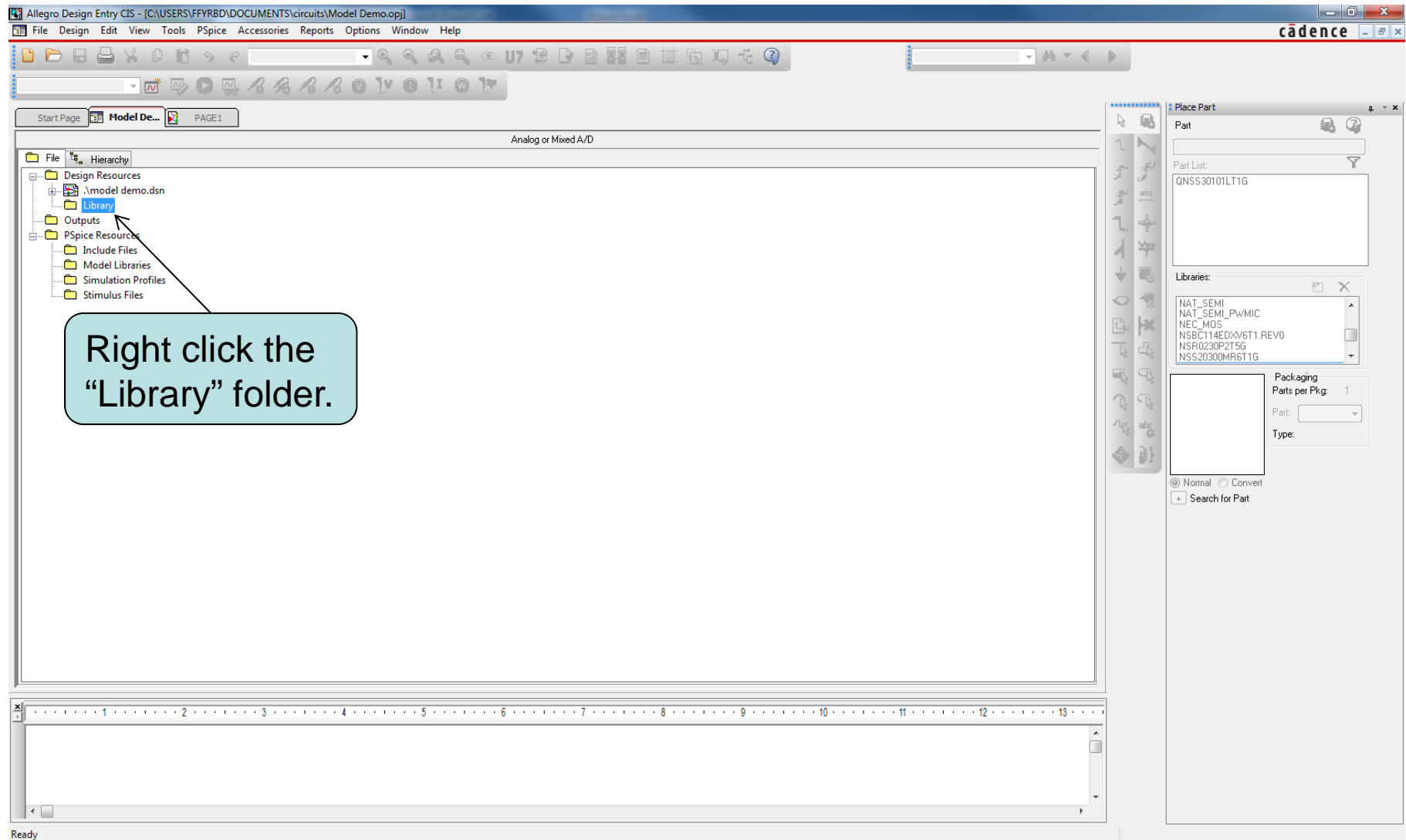
Import .OLB File into OrCAD



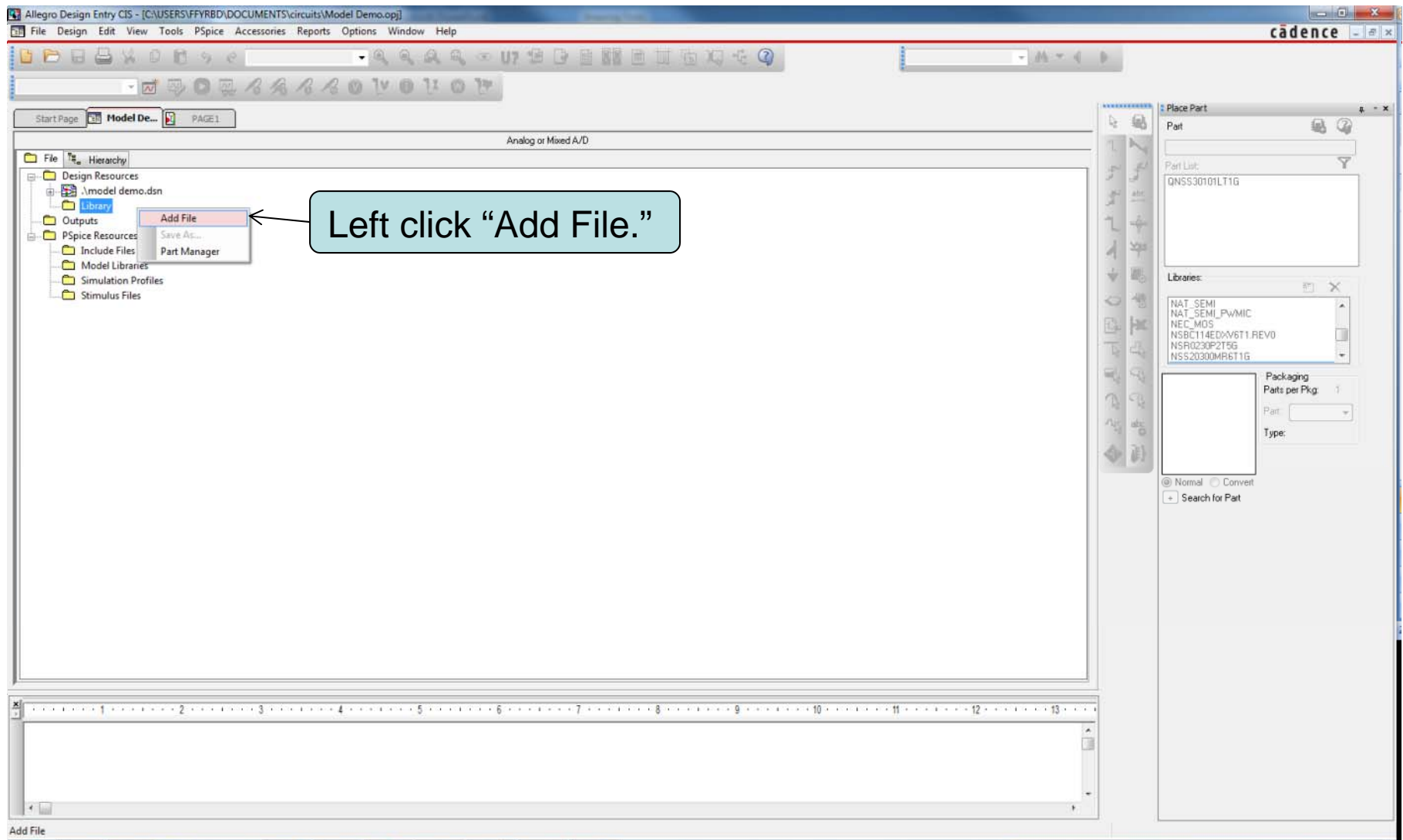
Import .LIB File into Your Project



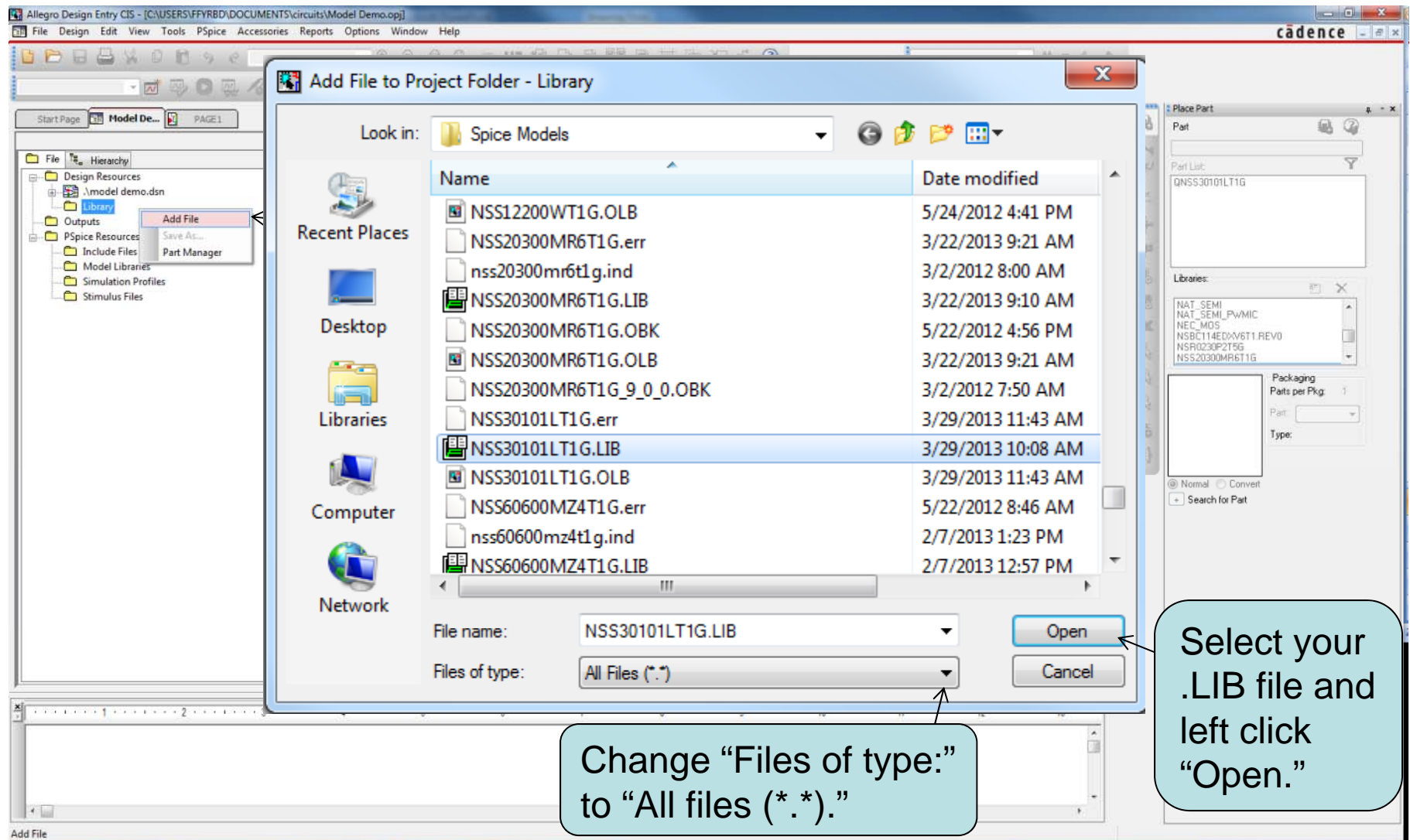
Import .LIB File into Your Project



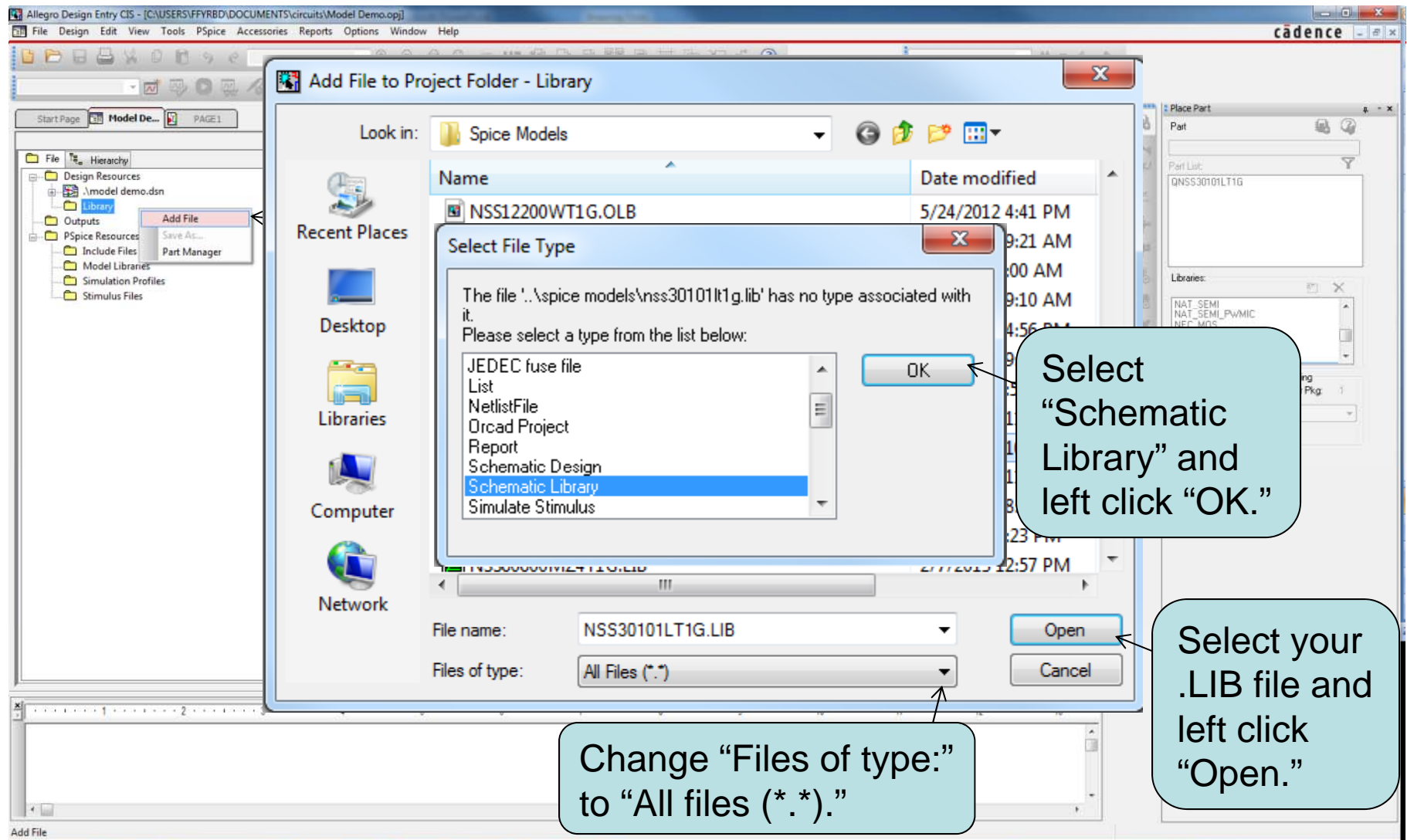
Import .LIB File into Your Project



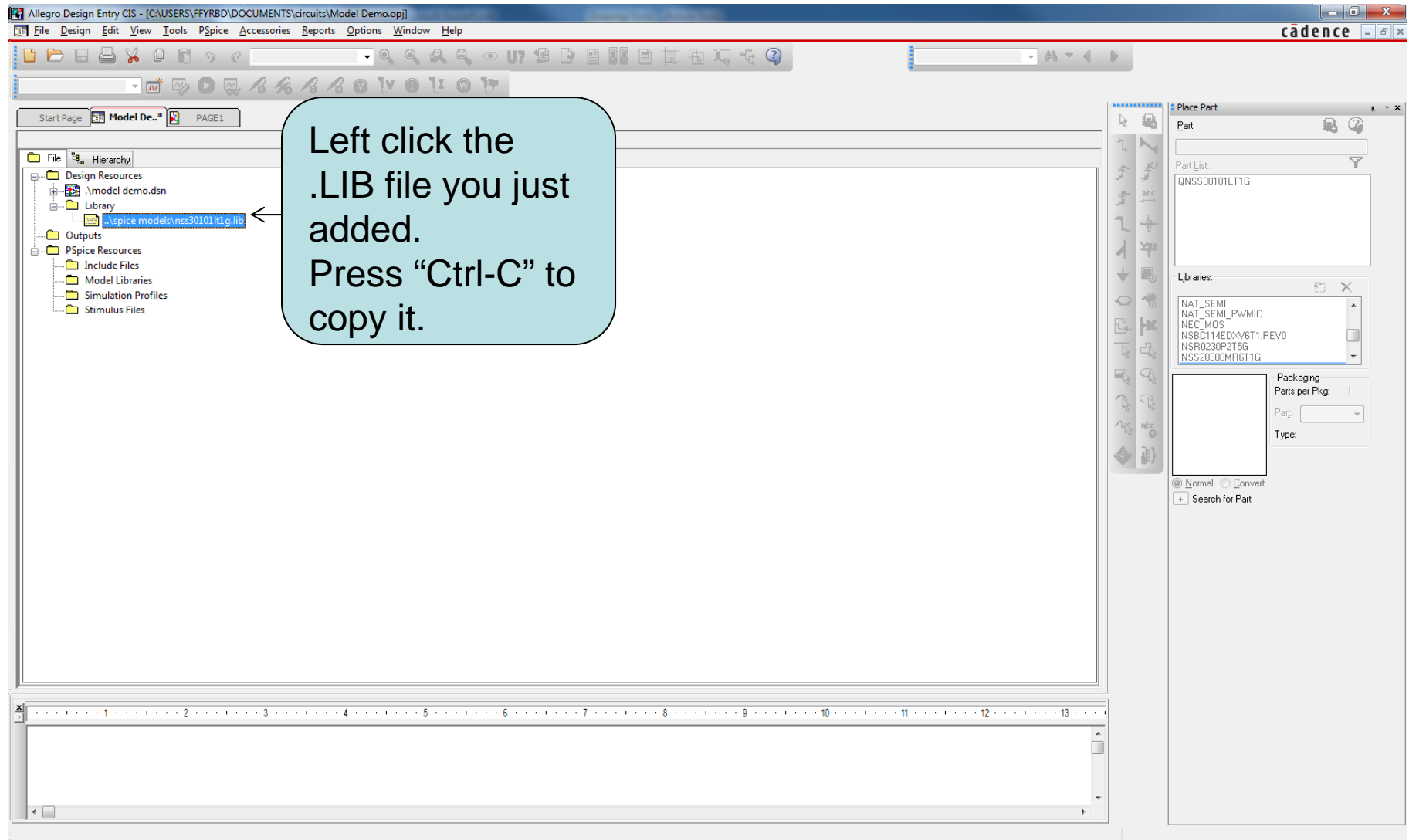
Import .LIB File into Your Project



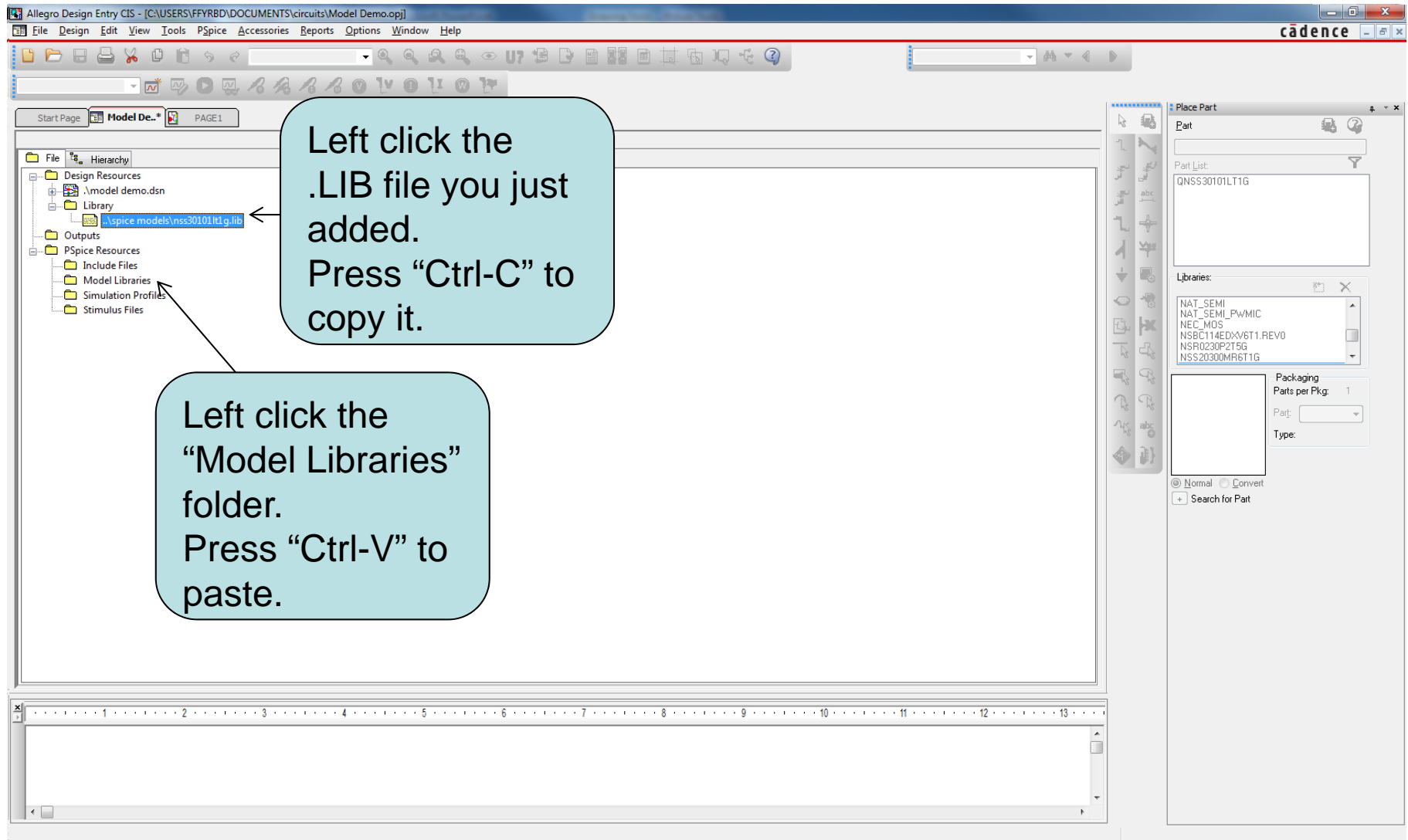
Import .LIB File into Your Project



Import .LIB File into Your Project



Import .LIB File into Your Project



Import .LIB File into Your Project

The screenshot shows the Allegro Design Entry CIS interface. The file hierarchy on the left includes Design Resources, Library, Outputs, PSpice Resources, Include Files, Model Libraries, Simulation Profiles, and Stimulus Files. The .LIB file is located in both the Library and Model Libraries folders. A callout box points to these locations.

The .LIB file should be in both the "Library" and "Model Libraries" folders.

Very Important! You will have to add the .LIB file for this model to every project you plan on using it in.

The right side of the interface shows the Place Part dialog box with the Part List and Libraries sections.