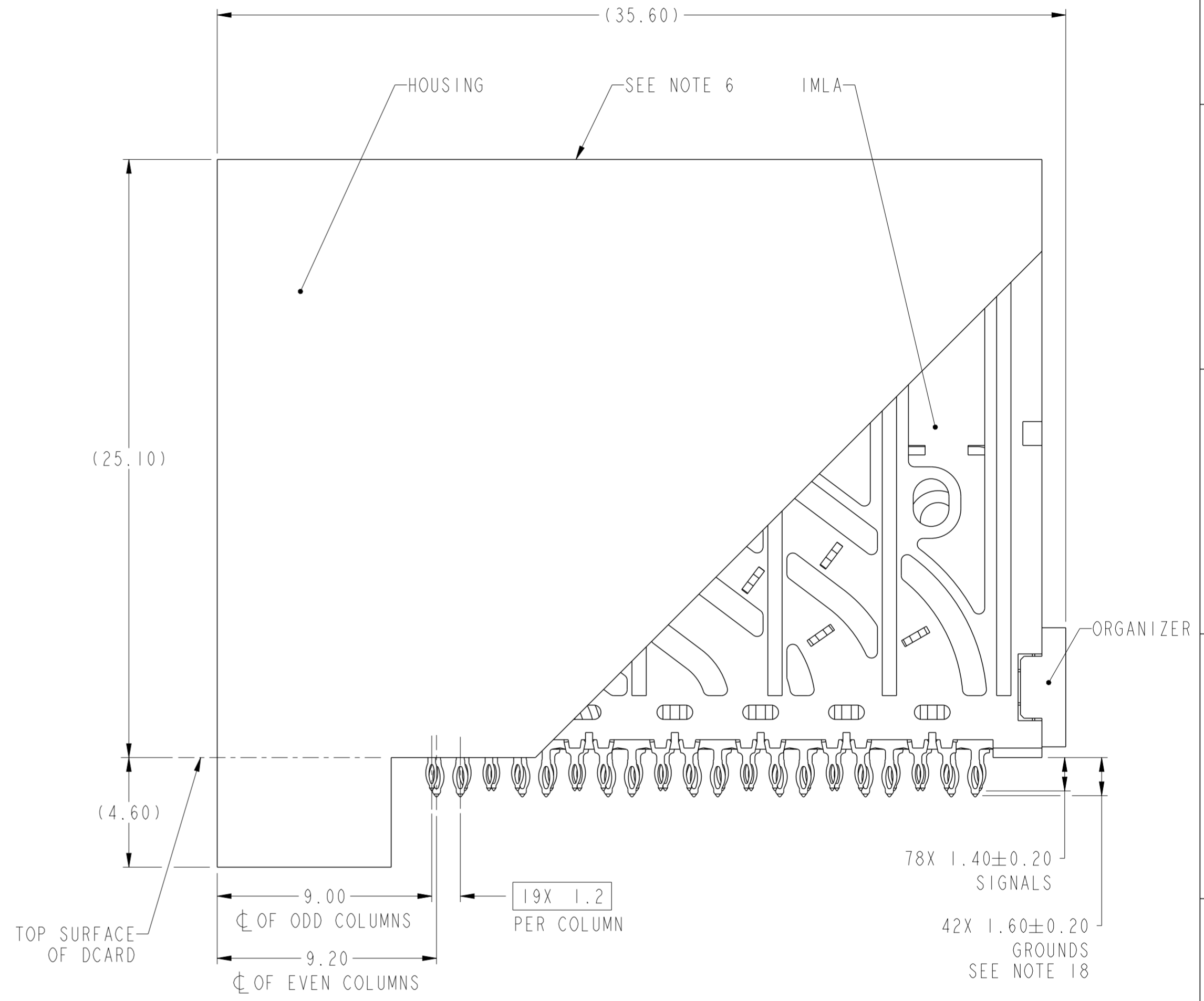
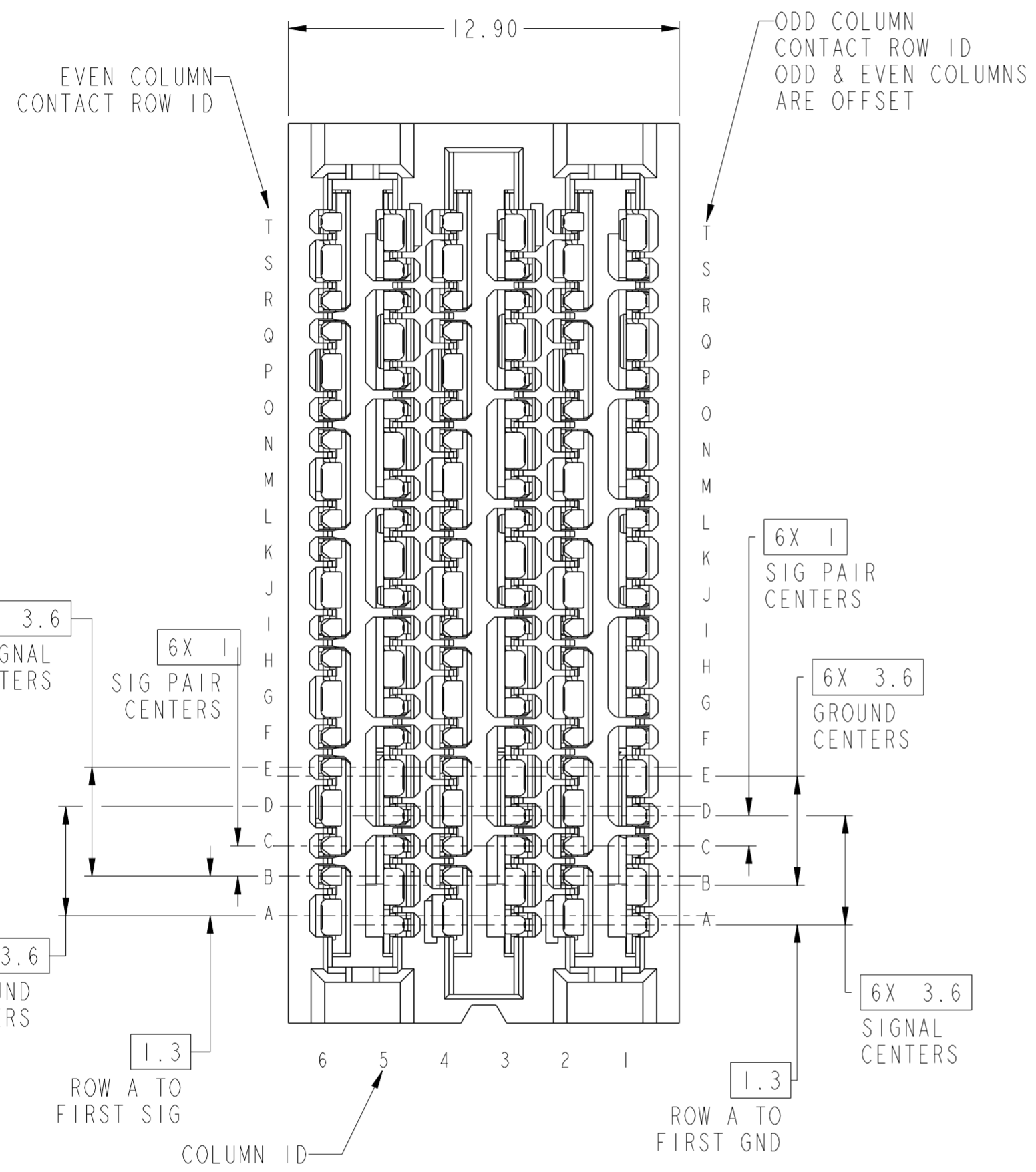


PRODUCT NUMBER
SEE TABLE



10131760-101LF
STANDARD MATE RECEPTACLE
SCALE 6:1

spec ref	SEE NOTES	dr	Justin Chen	2014/12/23	projection	MM	size	A2	scale	6:1
tolerance std	TOLERANCES UNLESS OTHERWISE SPECIFIED	eng	Terry Luo	2017/01/19			ecn no	-	rel level	Released
ASME Y14.5M		chr	Heaven Cen	2017/01/19						
surface	linear	appr	Pai-Ming Zheng	2017/01/19	product family	ExaMAX	rel level	Released	rev	A
	angular				title	ExaMAX R.A. RECEPTACLE ASSY	cat. no.	SEE TABLE	Product - Customer Drw	sheet 1 of 11

PDS: Rev :A

STATUS:Released

Printed: Jan 19, 2017

1 2 3 4 5 6 7 8

A

B

C

D

E

F

A

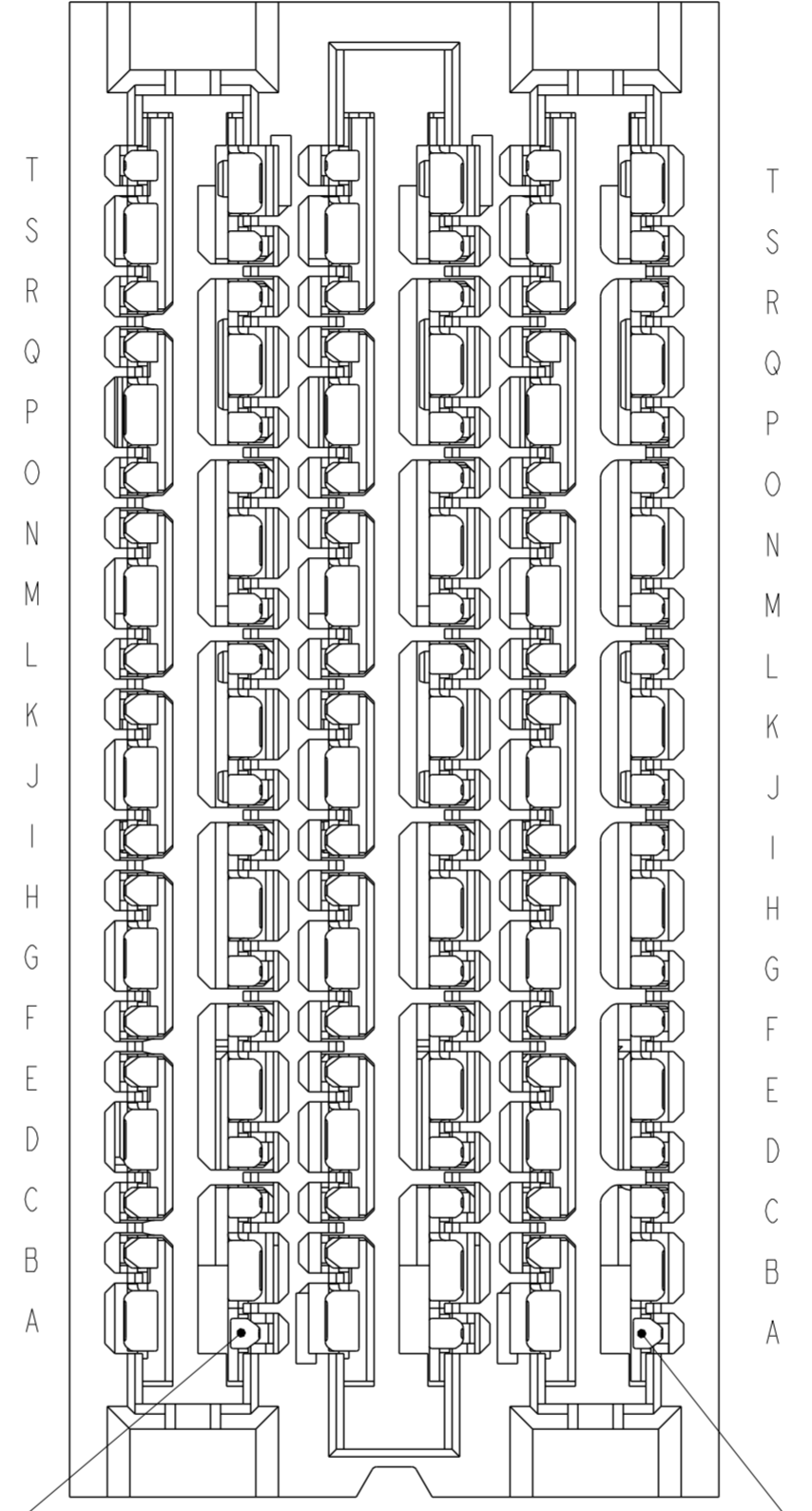
B

C

D

E

F



ADVANCED MATE
POSITION A5
SEE NOTE 13

ADVANCED MATE
POSITION A1
SEE NOTE 13

10131760-201LF
ADVANCED MATE RECEPTACLE
ADVANCED MATE POSITIONS ARE A1 AND A5 ONLY
FOR ALL DIMENSIONS SEE 10131760-101LF ON SHEET 1
SCALE 7:1

**Amphenol
FCi**

© 2016 APCI

spec ref	SEE NOTES	dr	Justin Chen	2014/12/23	projection	MM	size	A2	scale	7:1										
tolerance std	TOLERANCES UNLESS OTHERWISE SPECIFIED	eng	Terry Luo	2017/01/19			ecn no	-	rel level	Released										
ASME Y14.5M		chr	Heaven Cen	2017/01/19																
surface	<table border="1"> <tr> <td>linear</td> <td>0.X</td> <td>±.3</td> </tr> <tr> <td></td> <td>0.XX</td> <td>±.10</td> </tr> <tr> <td></td> <td>0.XXX</td> <td>±.050</td> </tr> <tr> <td>angular</td> <td>0°</td> <td>±°</td> </tr> </table>	linear	0.X	±.3		0.XX	±.10		0.XXX	±.050	angular	0°	±°	appr	Pai-Ming Zheng	2017/01/19	product family	ExaMAX	rel level	Released
linear		0.X	±.3																	
		0.XX	±.10																	
	0.XXX	±.050																		
angular	0°	±°																		
		Amphenol FCi	title	ExaMAX R.A. RECEPTACLE ASSY	cat. no.	SEE TABLE	Product - Customer Drw	sheet 2 of 11												
			dwg no	10131760	rev	A														

A

B

C

D

E

F

A

B

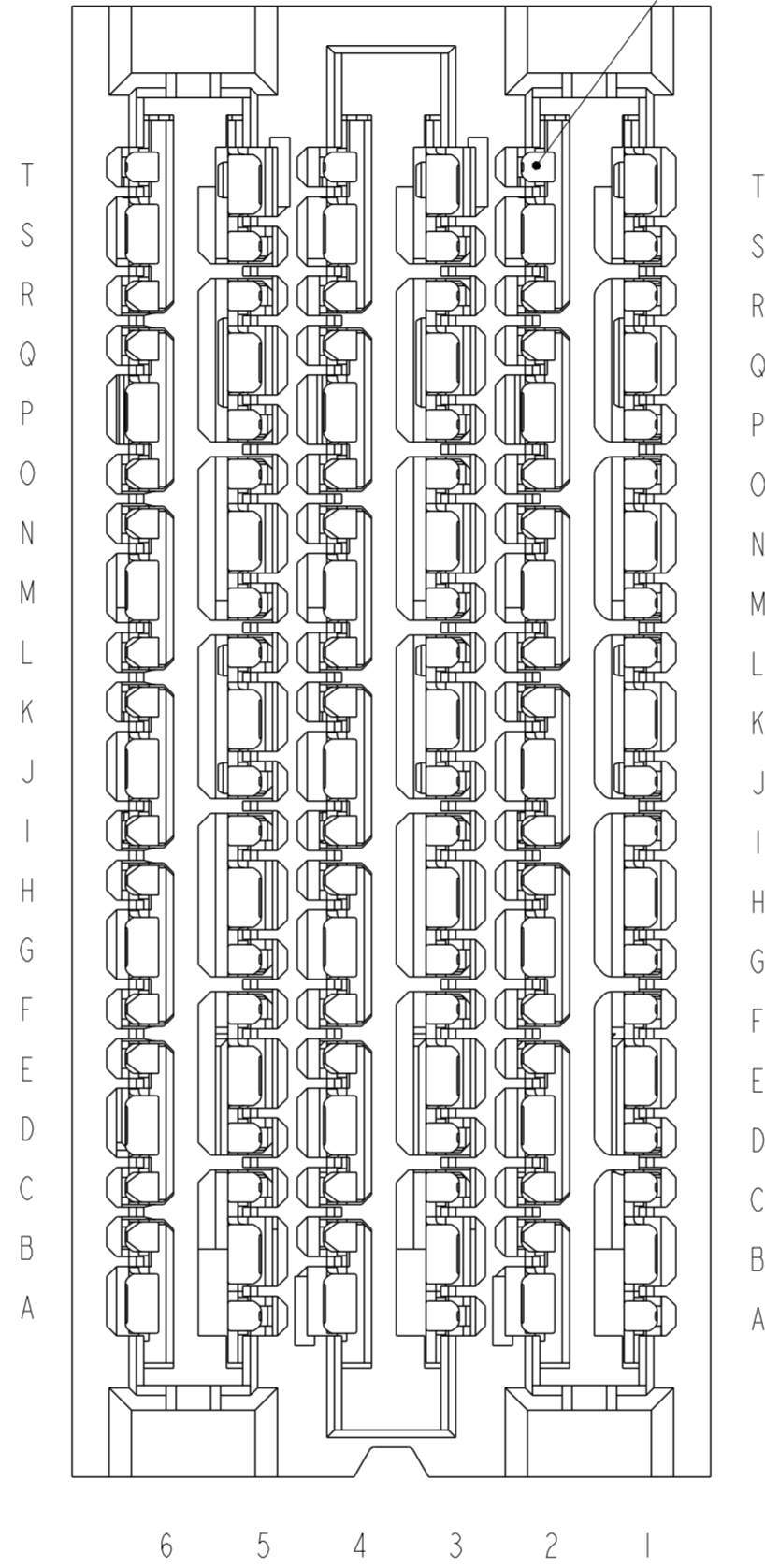
C

D

E

F

SHORT DETECT
POSITION T2
SEE NOTE 14

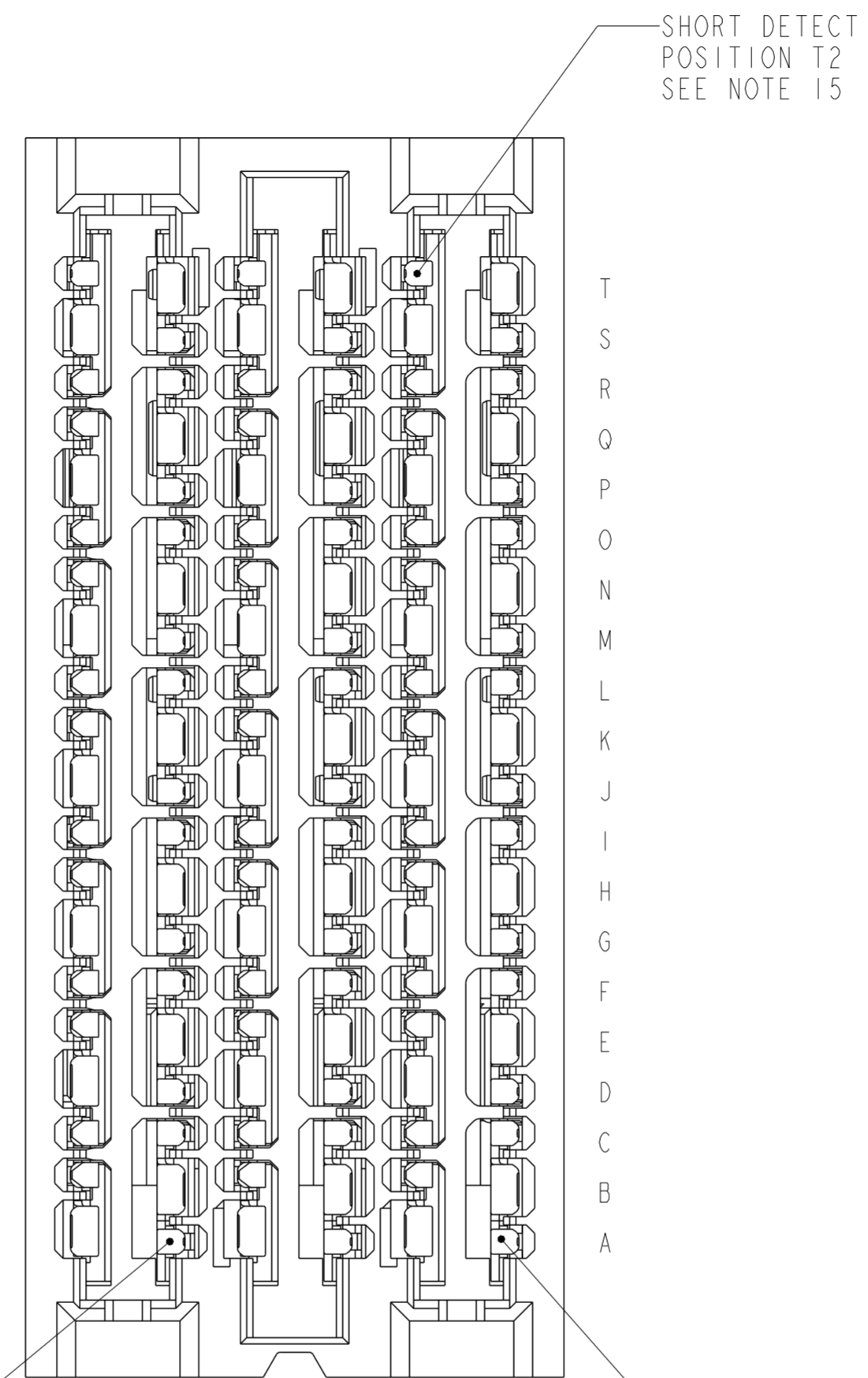


10131760-301LF
SHORT DETECT RECEPTACLE
SHORT DETECT POSITION IS T2
FOR ALL DIMENSIONS SEE 10131760-101LF ON SHEET 1
SCALE 7:1

Amphenol
FCi

© 2016 AFci

spec ref	SEE NOTES	dr	Justin Chen	2014/12/23	projection	MM	size	A2	scale	7:1								
tolerance std	TOLERANCES UNLESS OTHERWISE SPECIFIED	eng	Terry Luo	2017/01/19			ecn no	-	rel level	Released								
ASME Y14.5M		chr	Heaven Cen	2017/01/19														
surface	<table border="1"> <tr> <td rowspan="3">linear</td> <td>0.X</td> <td>±.3</td> </tr> <tr> <td>0.XX</td> <td>±.10</td> </tr> <tr> <td>0.XXX</td> <td>±.050</td> </tr> <tr> <td>angular</td> <td>0°</td> <td>±°</td> </tr> </table>	linear	0.X	±.3	0.XX	±.10	0.XXX	±.050	angular	0°	±°	appr	Pai-Ming Zheng	2017/01/19	product family	ExaMAX	rel level	Released
linear	0.X		±.3															
	0.XX		±.10															
	0.XXX	±.050																
angular	0°	±°																
				title ExaMAX R.A. RECEPTACLE ASSY 6 PR, 120 POS, 6 IMLA, 13mm		dwg no 10131760		rev A										
		cat. no.		SEE TABLE		Product - Customer Drw		sheet 3 of 11										



ADVANCED MATE POSITION A5 SEE NOTE 15

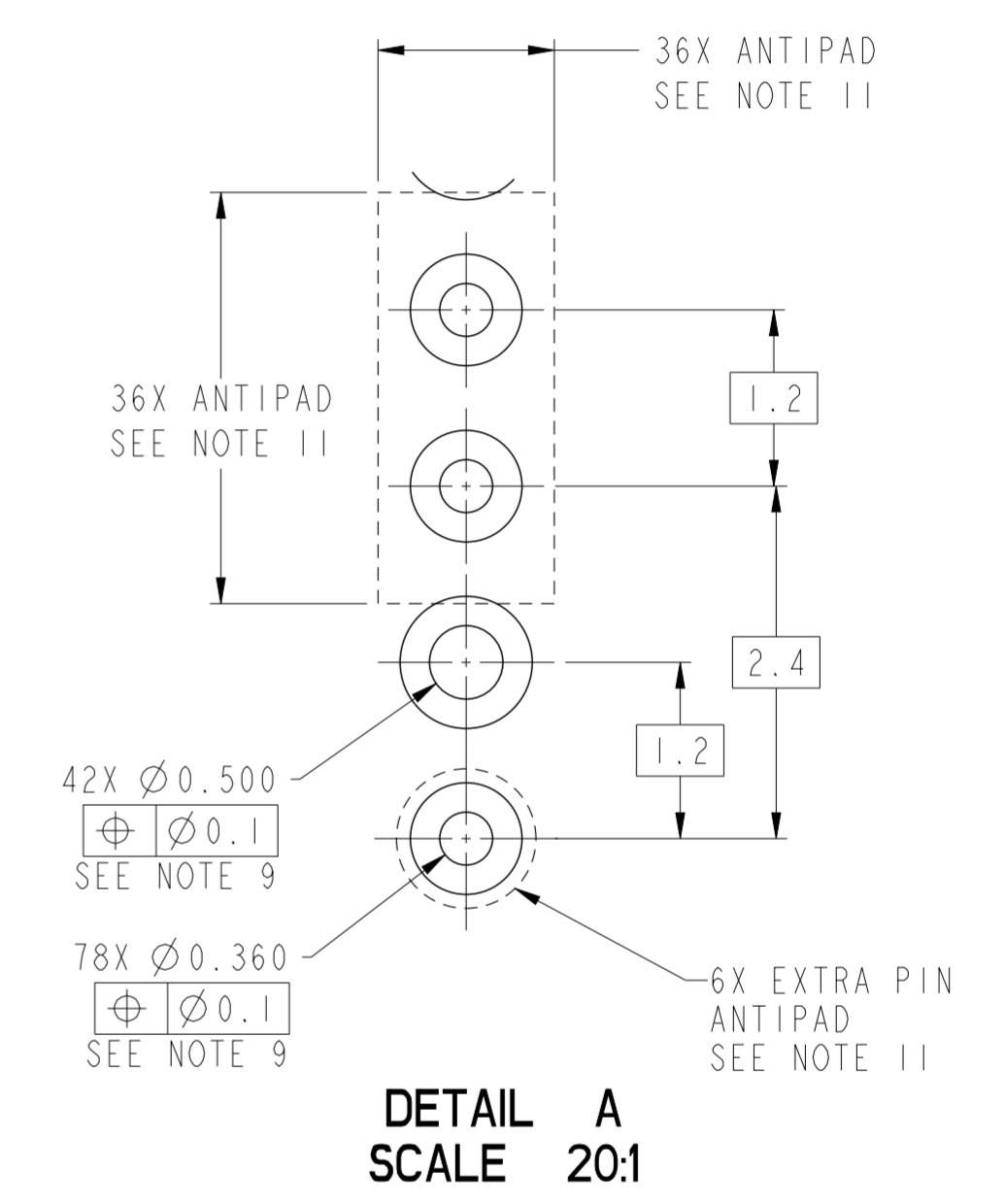
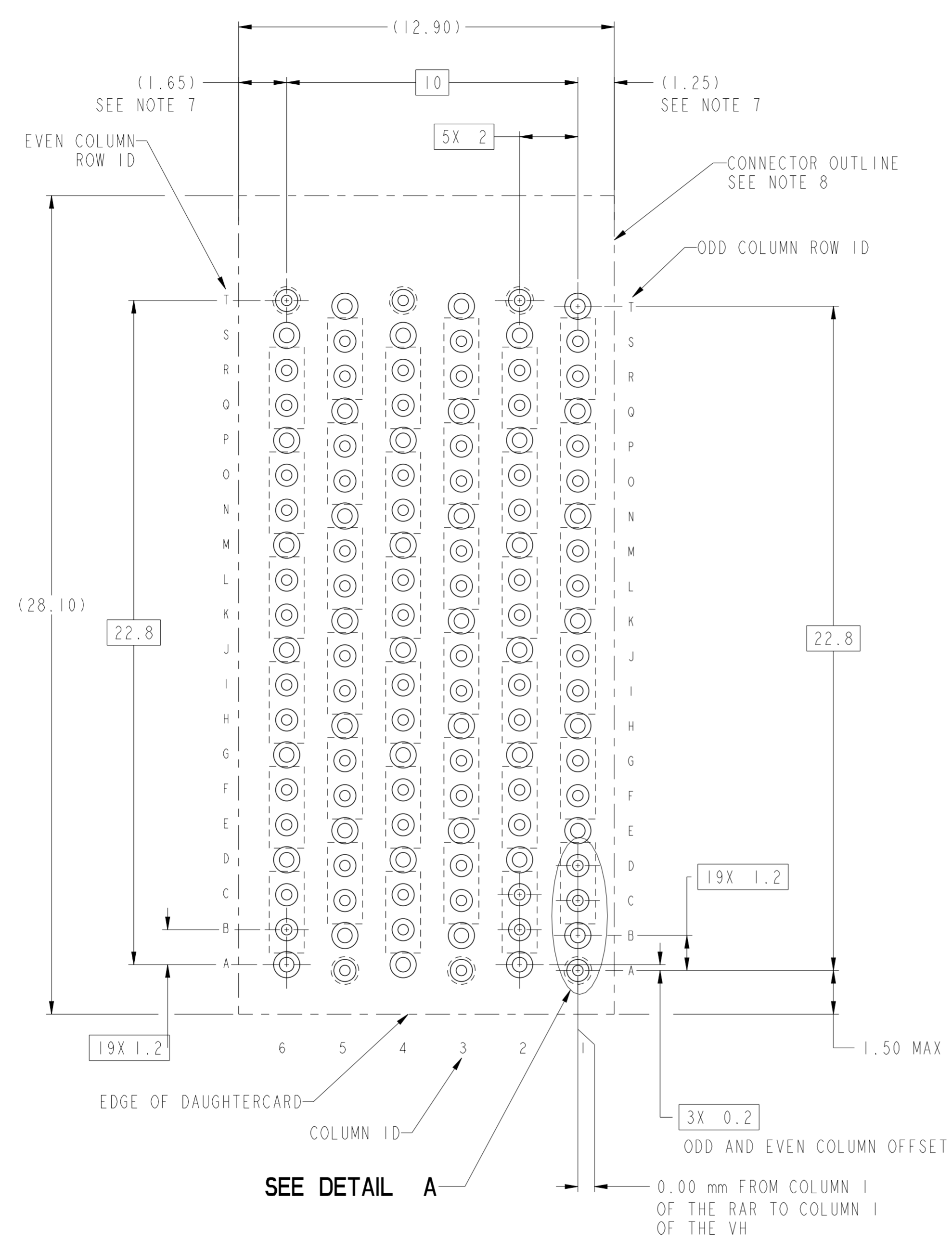
ADVANCED MATE POSITION A1 SEE NOTE 15

10131760-401LF
ADVANCED MATE/SHORT DETECT RECEPTACLE
 ADVANCED MATE POSITIONS ARE POSITIONS A1 AND A5 ONLY
 SHORT DETECT POSITION IS T2
 FOR ALL DIMENSIONS SEE 10131760-101LF ON SHEET 1
 SCALE 7:1

Amphenol FCI

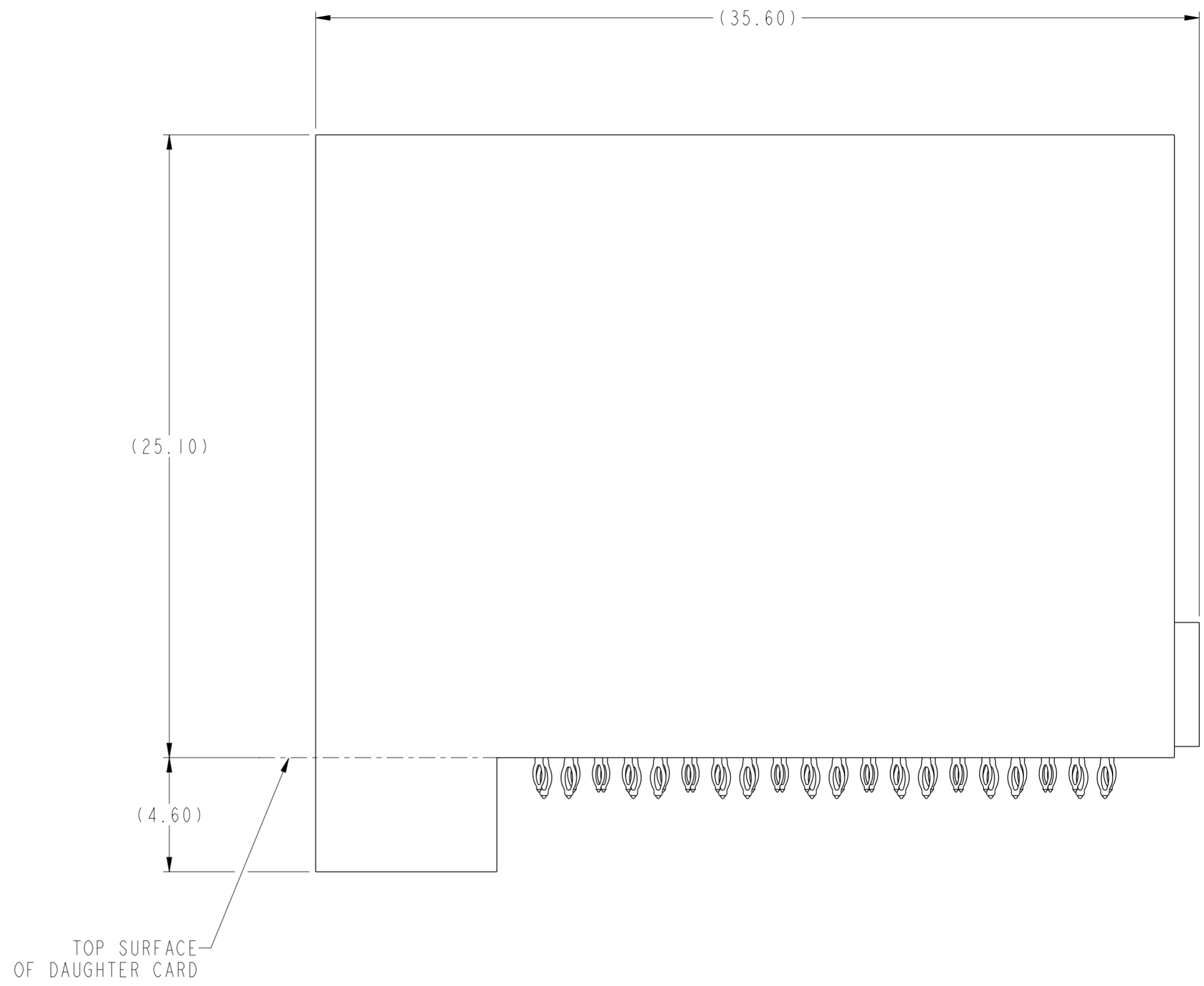
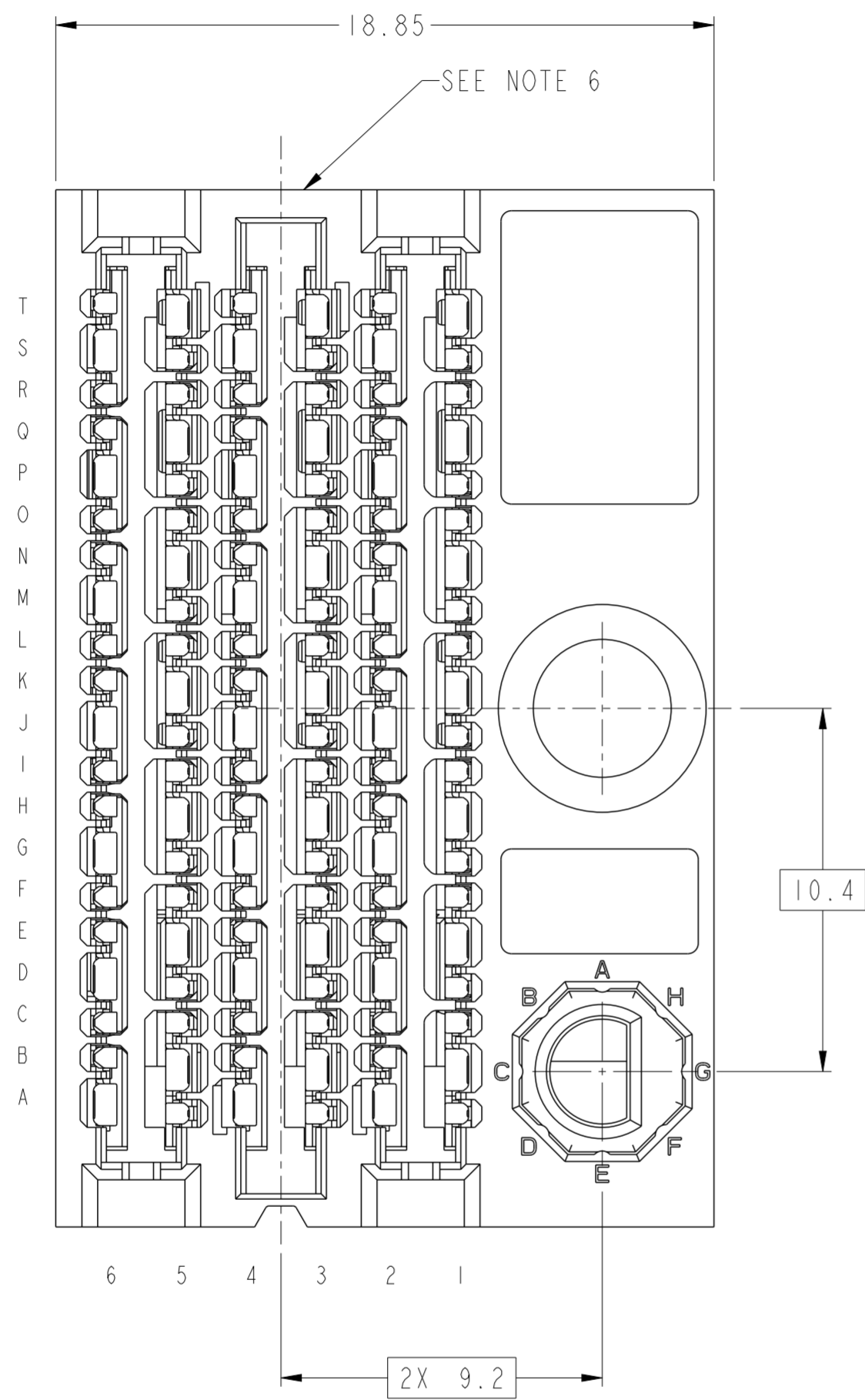
© 2016 AFCI

spec ref	SEE NOTES	dr	Justin Chen	2014/12/23	projection	MM	size	A2	scale	7:1										
tolerance std	TOLERANCES UNLESS OTHERWISE SPECIFIED	eng	Terry Luo	2017/01/19			ecn no	-												
ASME Y14.5M		chr	Heaven Cen	2017/01/19			rel level	Released												
surface	<table border="1"> <tr> <td rowspan="3">linear</td> <td>0.X</td> <td>±.3</td> </tr> <tr> <td>0.XX</td> <td>±.10</td> </tr> <tr> <td>0.XXX</td> <td>±.050</td> </tr> <tr> <td>angular</td> <td>0°</td> <td>±°</td> </tr> </table>	linear	0.X	±.3	0.XX	±.10	0.XXX	±.050	angular	0°	±°	appr	Pai-Ming Zheng	2017/01/19	product family	ExaMAX	rel level	Released		
linear	0.X		±.3																	
	0.XX		±.10																	
	0.XXX	±.050																		
angular	0°	±°																		
				title ExaMAX R.A. RECEPTACLE ASSY 6 PR, 120 POS, 6 IMLA, 13mm		dwg no 10131760	rev A													
		cat. no.		SEE TABLE		Product - Customer Drw		sheet 4 of 11												



10131760-X01LF
 RECOMMENDED PCB LAYOUT
 COMPONENT SIDE
 NOTES 7, 8, 9, & 11
 SCALE 8:1

spec ref	SEE NOTES	dr	Justin Chen	2014/1/22/3	projection	MM	size	A2	scale	8:1
tolerance std	TOLERANCES UNLESS OTHERWISE SPECIFIED	eng	Terry Luo	2017/01/19			ecn no	-	rel level	Released
ASME Y14.5M		chr	Heaven Cen	2017/01/19						
		appr	Pai-Ming Zheng	2017/01/19						
surface	linear	0.X	±.3		title ExaMAX R.A. RECEPTACLE ASSY 6 PR, 120 POS, 6 IMLA, 13mm	dwg no 10131760	rev A			
		0.XX	±.10					cat. no.	Product - Customer Drw	sheet 5 of 11
	angular	0°	±°							



TOP SURFACE OF DAUGHTER CARD

10131760-X1ALF THRU 10131760-X1JLF
 RIGHT GUIDANCE (SEE NOTE 17)
 FOR ALL OTHER DIMENSIONS SEE 10131760-101LF ON SHEET 1
 SCALE 6:1

Amphenol
FCi

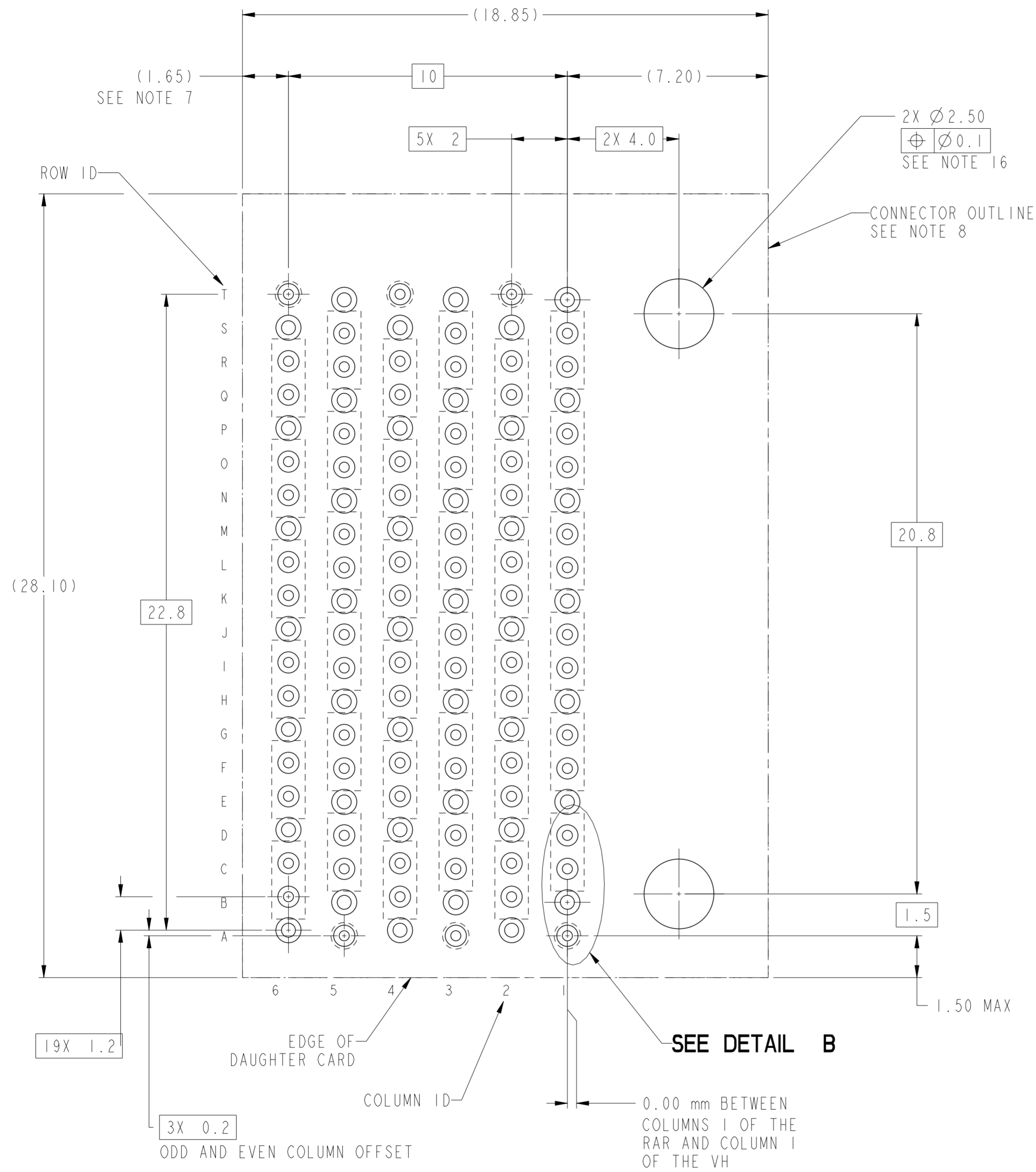
© 2016 AFci

spec ref	SEE NOTES	dr	Justin Chen	2014/1/2/23	projection	MM	size	A2	scale	6:1
tolerance std	TOLERANCES UNLESS OTHERWISE SPECIFIED	eng	Terry Luo	2017/01/19			ecn no	-	rel level	Released
ASME Y14.5M		chr	Heaven Cen	2017/01/19						
surface	linear	appr	Pai-Ming Zheng	2017/01/19	product family	ExaMAX	rel level	Released	rev	A
	angular				title	ExaMAX R.A. RECEPTACLE ASSY	cat. no.	SEE TABLE	Product - Customer Drw	sheet 6 of 11

PDS: Rev :A

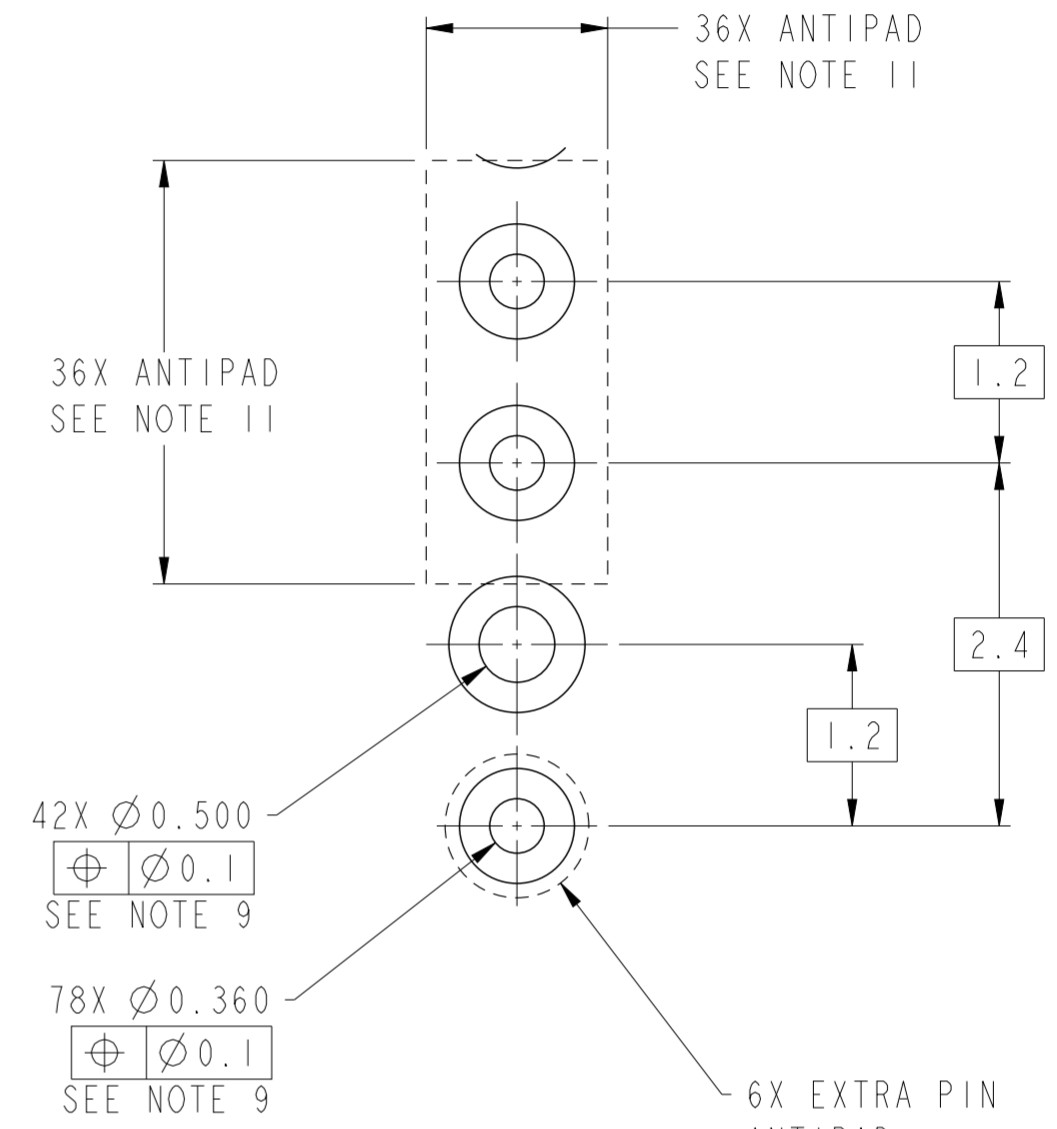
STATUS:Released

Printed: Jan 19, 2017



2X \varnothing 2.50
 \oplus \varnothing 0.1
 SEE NOTE 16

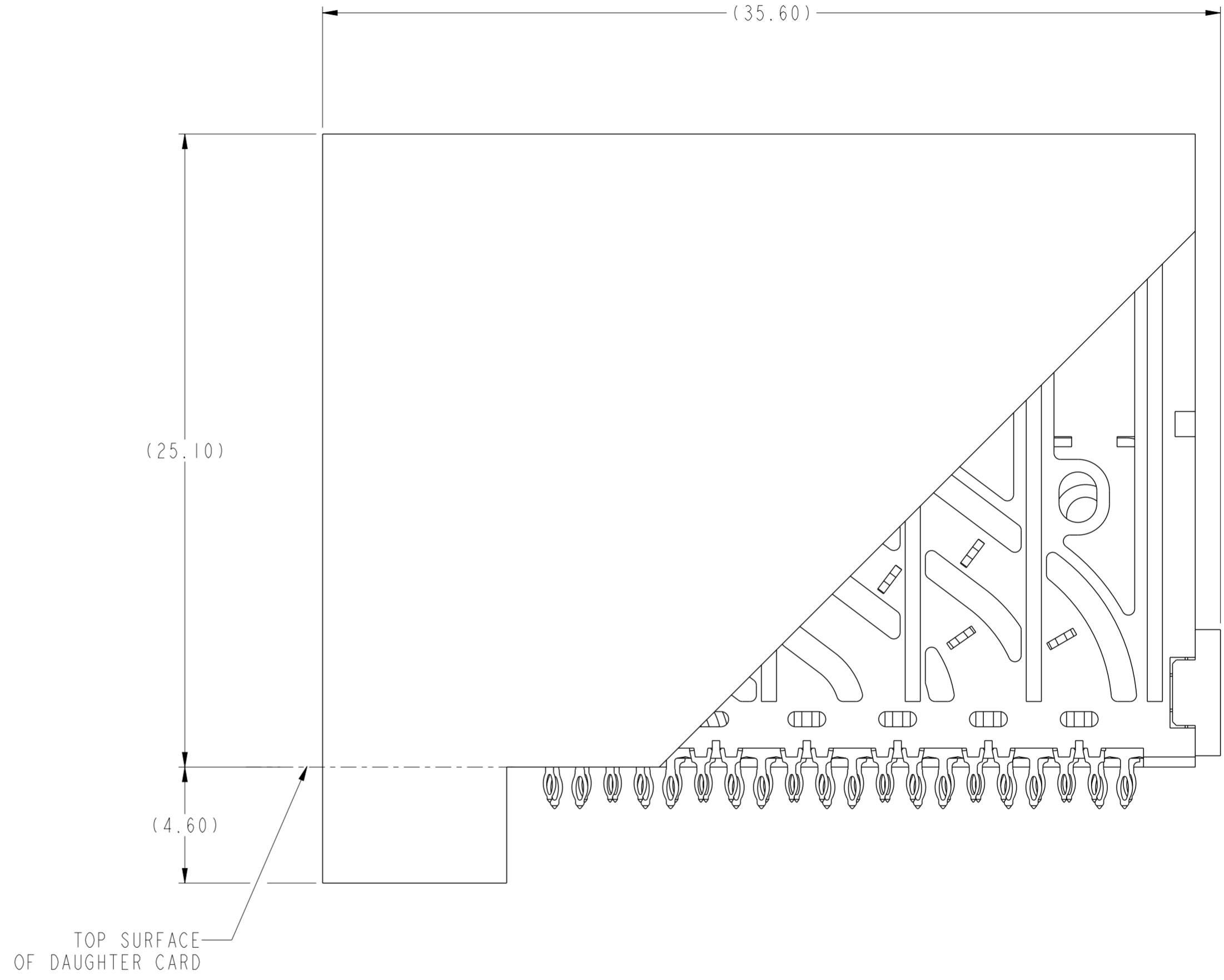
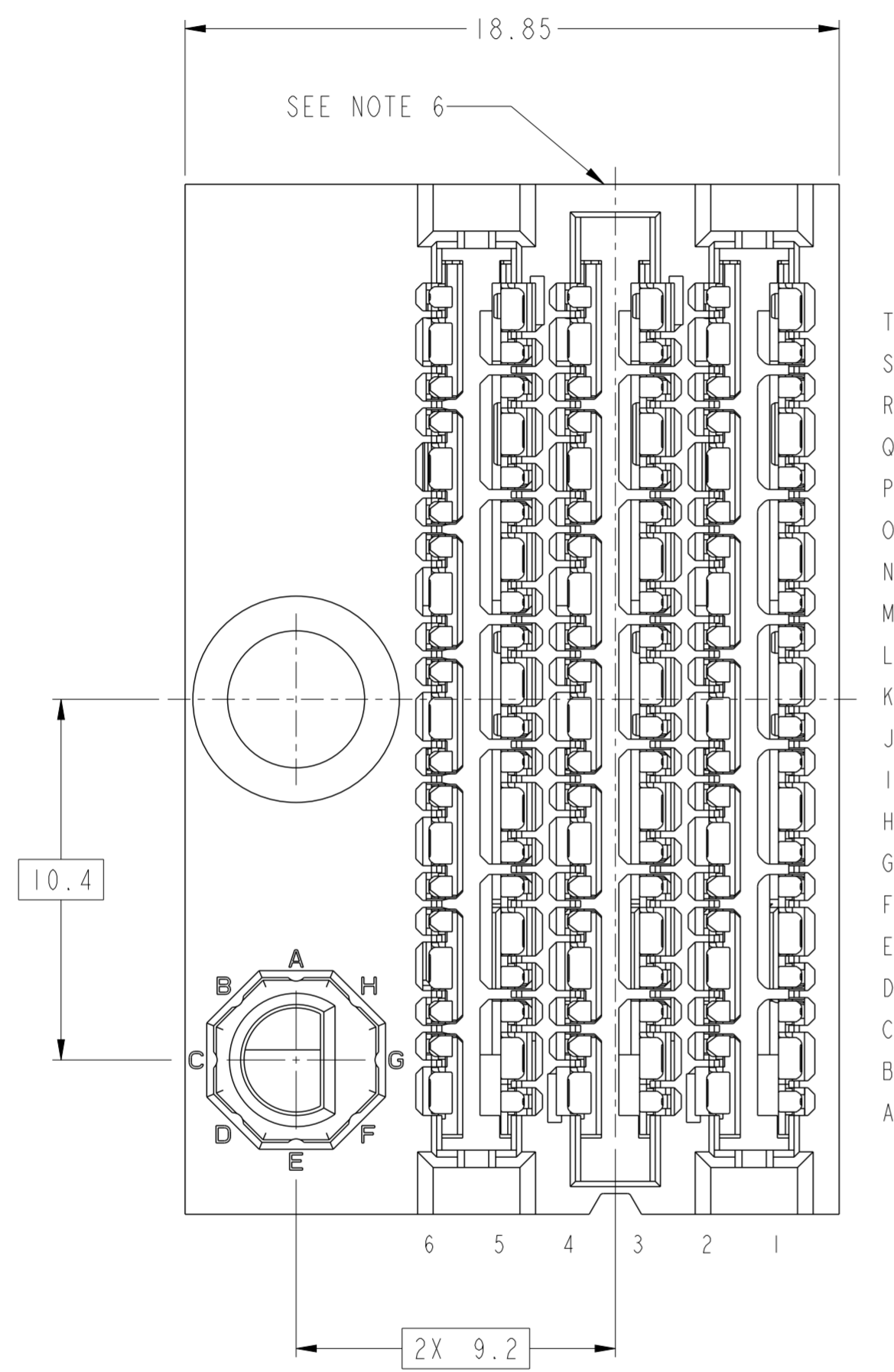
CONNECTOR OUTLINE
 SEE NOTE 8



DETAIL B
 SCALE 20:1

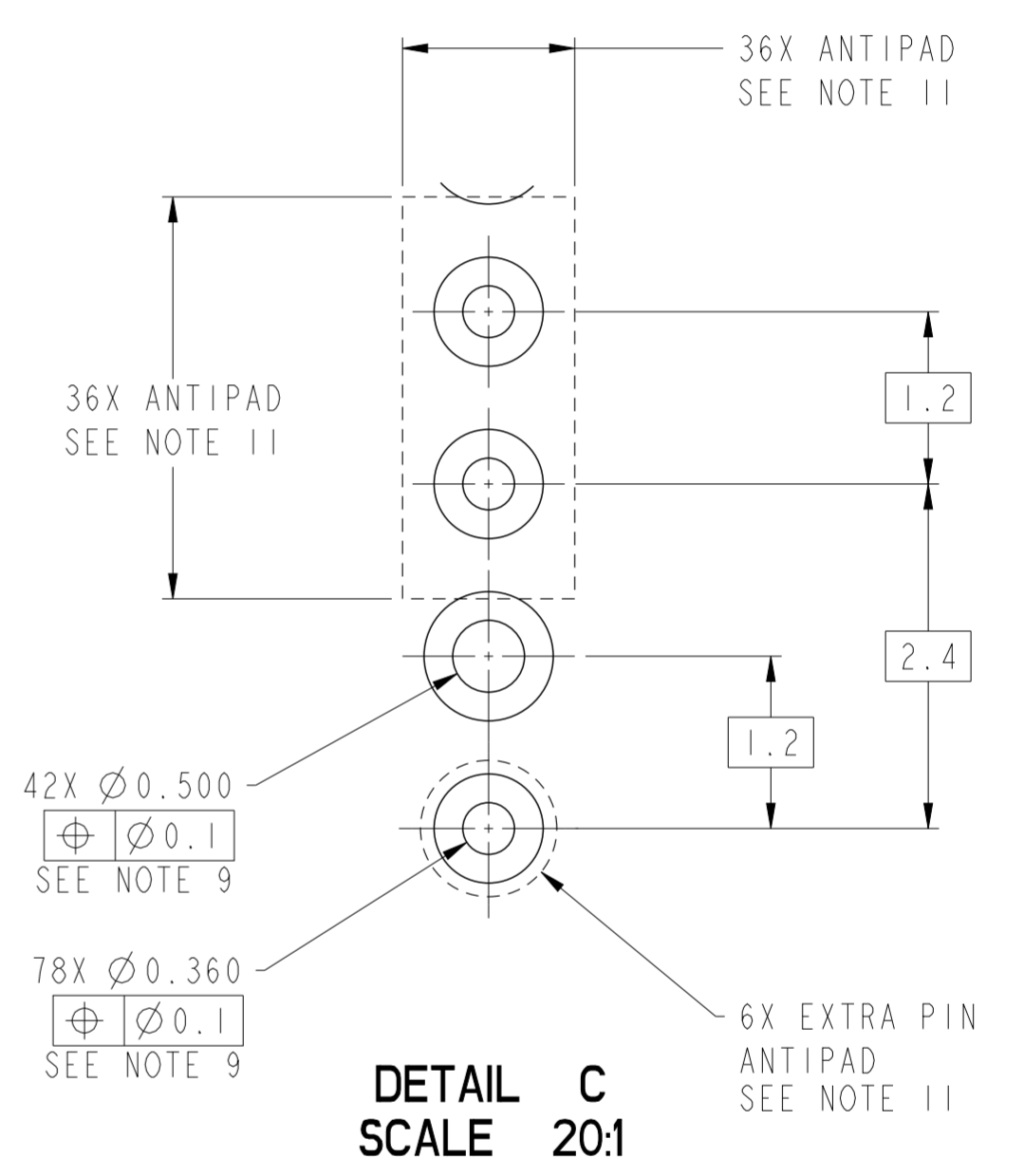
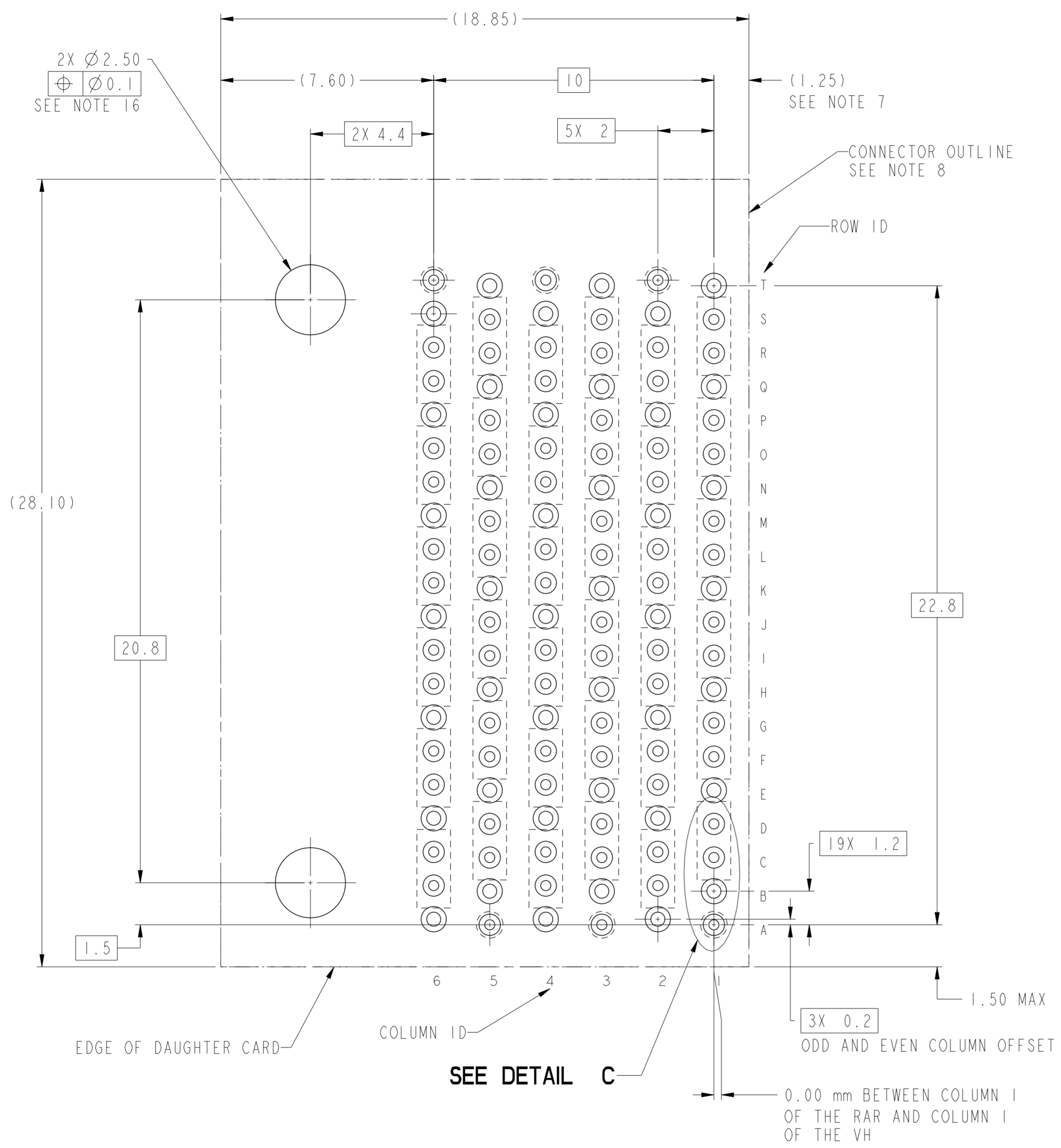
**10131760-X1ALF THRU -X1JLF
 RECOMMENDED PCB LAYOUT
 COMPONENT SIDE
 NOTES 7, 8, 9, 11 & 16
 SCALE 8:1**

spec ref	SEE NOTES	dr	Justin Chen	2014/12/23	projection	MM	size	A2	scale	1:1	
tolerance std	TOLERANCES UNLESS OTHERWISE SPECIFIED	eng	Terry Luo	2017/01/19		← →	ecn no	-	rel level	Released	
ASME Y14.5M		chr	Heaven Cen	2017/01/19							
surface	linear	appr	Pai-Ming Zheng	2017/01/19	product family	-	cat. no.	-	Product - Customer Drw	sheet 7 of 11	
	angular				Amphenol FCi	title	ExaMAX R.A. RECEPTACLE ASSY	dwg no	10131760	rev	A



10131760-X2ALF THRU 10131760-X2JLF
LEFT GUIDANCE (SEE NOTE 17)
FOR ALL OTHER DIMENSIONS SEE 10131760-101LF ON SHEET 1
SCALE 6:1

spec ref	SEE NOTES	dr	Justin Chen	2014/1/2/23	projection	MM	size	A2	scale	6:1
tolerance std	TOLERANCES UNLESS OTHERWISE SPECIFIED	eng	Terry Luo	2017/01/19			ecn no	-	rel level	Released
ASME Y14.5M		chr	Heaven Cen	2017/01/19						
		appr	Pai-Ming Zheng	2017/01/19						
surface	linear	0.X	±.3		title ExaMAX R.A. RECEPTACLE ASSY 6 PR, 120 POS, 6 IMLA, 13mm cat. no. SEE TABLE	product family ExaMAX	dwg no 10131760	rev A	sheet 8 of 11	
		0.XX	±.10							
		0.XXX	±.050							
	angular	0°	±°							



10131760-X2ALF THRU -X2JLF
RECOMMENDED PCB LAYOUT
COMPONENT SIDE
NOTES 7, 8, 9, 11 & 16
SCALE 8:1

spec ref	SEE NOTES	dr	Justin Chen	2014/12/23	projection	MM	size	A2	scale	8:1		
tolerance std	TOLERANCES UNLESS OTHERWISE SPECIFIED	eng	Terry Luo	2017/01/19			ecn no	-	rel level	Released		
ASME Y14.5M		chr	Heaven Cen	2017/01/19								
		appr	Pai-Ming Zheng	2017/01/19								
surface	linear	0.X	±.3		title ExaMAX R.A. RECEPTACLE ASSY 6 PR, 120 POS, 6 IMLA, 13mm	product family -	dwg no 10131760	rev A	angular 0° ±°	cat. no. -	Product - Customer Drw	sheet 9 of 11
		0.XX	±.10									
		0.XXX	±.050									

10131760 - Y Y Y L F

ASSEMBLY PART NUMBER	DESCRIPTION
10131760-1YYLF	STANDARD MATE
10131760-2YYLF	ADVANCED MATE
10131760-3YYLF	SHORT DETECT
10131760-4YYLF	ADVANCED MATE & SHORT DETECT

MODULE DESCRIPTION	DESIGNATION REPRESENTED IN DASH NUMBER										BASE MODEL
	1A	1B	1C	1D	1E	1F	1G	1H	1J (NO KEY)		
WITHOUT END GUIDES MODULE (SEE SHEET 1)	01										
RIGHT GUIDANCE MODULE (SEE SHEET 6)											
LEFT GUIDANCE MODULE (SEE SHEET 8)											

Amphenol FCI

© 2016 AFCI

spec ref	SEE NOTES	dr	Justin Chen	2014/1/2/23	projection	MM	size	A2	scale	1:1
tolerance std	TOLERANCES UNLESS OTHERWISE SPECIFIED	eng	Terry Luo	2017/01/19		←→	ecn no	-	rel level	Released
ASME Y14.5M		chr	Heaven Cen	2017/01/19						
		appr	Pai-Ming Zheng	2017/01/19						
surface	linear	0.X	±.3		title	ExaMAX R.A. RECEPTACLE ASSY	dwg no	10131760	rev	A
		0.XX	±.10							
		0.XXX	±.050							
	angular	0°	±°	cat. no.	-	Product - Customer Drw	sheet 10 of 11			

PDS: Rev :A

STATUS:Released

Printed: Jan 19, 2017

NOTES:

- ① - CONNECTOR MATERIALS:
 HOUSING: HIGH TEMP THERMOPLASTIC, BLACK, UL94-V0
 IMLA PLASTIC: HIGH TEMP THERMOPLASTIC, BLACK, UL94-V0
 CONTACT: COPPER ALLOY
 ORGANIZER: HIGH TEMP THERMOPLASTIC, BLACK, UL94-V0
- 2 - CONTACT PLATING:
 SEPARABLE INTERFACE:
 PERFORMANCE-BASED PLATING, QUALIFIED TO MEET THE REQUIREMENTS OF FCI PRODUCT SPECIFICATION GS-12-1096 INCLUDING TELCORDIA GR-1217-CORE (NOVEMBER 1995) CENTRAL OFFICE TEST SEQUENCE

 PRESS-FIT TAILS:
 TIN OVER NICKEL (LEAD FREE)
- 3 - PRODUCT SPECIFICATION: GS-12-1096
- 4 - APPLICATION SPECIFICATION GS-20-0361.
- 5 - PACKAGING MEETS GS-14-920 LEAD FREE LABELING SPECIFICATION.
- ⑥ - PRODUCT MARKING, (PART NUMBER & LOT CODE), ON THIS SURFACE.
- ⑦ - THE MINIMUM VIA SPACING BETWEEN STACKED CONNECTORS IS 3.0 MM FOR THIS RAR AND THE MATING HEADER. REFER TO THE APPLICATION SPECIFICATION FOR DETAILS
- ⑧ - CONNECTOR OUTLINE MAY BE SCREEN PRINTED ONTO CUSTOMER PCB TO BE USED AS A GUIDE FOR MANUAL CONNECTOR PLACEMENT.
- ⑨ - REFER TO CUSTOMER DRAWING 10119933 FOR INFORMATION ON PCB HOLE DIAMETERS AND PLATING OPTIONS
- 10 - THIS PRODUCT MEETS THE EUROPEAN UNION DIRECTIVES & OTHER COUNTRY REGULATIONS AS DESCRIBED IN GS-47-0004.
- ⑪ - REFER TO APPLICATION SPECIFICATION FOR TRACE ROUTING EXAMPLES THAT INCLUDE DIMENSIONS FOR ANTIPADS, TRACE WIDTH, TRACE SPACING, ETC.
- 12 - THE HOUSING WILL WITHSTAND EXPOSURE TO 260° C PEAK TEMPERATURE FOR 10-30 SECONDS IN A CONVECTION, INFRA-RED OR VAPOR PHASE REFLOW OVEN.
- ⑬ - THE ADVANCED MATE RECEPTACLE, 10131760-2XXLF, WHEN MATED WITH AN ADVANCED MATE VERTICAL HEADER OR AN ADVANCED MATE RIGHT-ANGLE HEADER, WILL PROVIDE 2 PAIRS OF MATING CONTACTS THAT MATE 0.75mm BEFORE THE REMAINDER OF THE SIGNAL AND GROUND CONTACTS.
- ⑭ - THE SHORT DETECT RECEPTACLE, 10131760-3XXLF, WHEN MATED WITH A STANDARD MATE VERTICAL HEADER OR A STANDARD MATE RIGHT-ANGLE HEADER WILL PROVIDE 1 PAIR OF MATING CONTACTS THAT MATE 1.00mm AFTER THE REMAINDER OF THE SIGNAL AND GROUND CONTACTS.
- ⑮ - THE ADVANCE MATE/SHORT DETECT RECEPTACLE, 10131760-4XXLF, WHEN MATED WITH AN ADVANCED MATE VERTICAL HEADER OR AN ADVANCED MATE RIGHT-ANGLE HEADER WILL PROVIDE 2 PAIRS OF MATING CONTACTS THAT MATE 0.75mm BEFORE THE REMAINDER OF THE SIGNAL AND GROUND CONTACTS AND 1 PAIR OF MATING CONTACTS THAT MATE 1.00mm AFTER THE REMAINDER OF THE SIGNAL AND GROUND CONTACTS.
- ⑯ - FOR CONNECTORS WITH EITHER A RIGHT OR LEFT GUIDE MODULE, TWO PHILLIPS PAN HEAD M2 HOLD DOWN SCREWS MUST BE USED TO SECURE THE CONNECTOR TO THE PCB. THE SCREW LENGTH SHALL BE 2.0-6.0mm PLUS THE THICKNESS OF THE BOARD. SCREWS ARE NOT PROVIDED WITH CONNECTOR.
- ⑰ - LEFT / RIGHT INTEGRATED GUIDE ORIENTATION IS DETERMINED BY THE LOCATION OF THE GUIDE FEATURES WHEN LOOKING AT THE MATING FACE OF THE RIGHT ANGLE RECEPTACLE. THE LEFT / RIGHT DESIGNATION OF THE MATING HEADER IS DEFINED BY THE RIGHT ANGLE RECEPTACLE THAT IT MATES WITH (i.e. A RIGHT GUIDE VERTICAL HEADER MATES WITH A RIGHT GUIDE RIGHT ANGLE RECEPTACLE.)
- ⑱ - ALL GROUND CONTACTS ARE COMMONED WITHIN A COLUMN.

spec ref	SEE NOTES	dr	Justin Chen	2014/12/23	projection	MM	size	A2	scale	6:1
tolerance std	TOLERANCES UNLESS OTHERWISE SPECIFIED	eng	Terry Luo	2017/01/19		← →	ecn no	-	rel level	Released
ASME Y14.5M		chr	Heaven Cen	2017/01/19						
surface	linear	appr	Pai-Ming Zheng	2017/01/19	product family	ExaMAX	rel level	Released	title	ExaMAX R.A. RECEPTACLE ASSY
	0.X ±.3								dwg no	10131760
	0.XX ±.10								rev	A
	0.XXX ±.050								cat. no.	SEE TABLE
	angular	0° ±°							Product - Customer Drw	sheet 11 of 11

Amphenol FCI

© 2016 AFCI